

Program range

Single pumps		Delivery
PVPC-C-3029	(2)(3)(6)	4 wk
PVPC-C-4046	(2)(4)(7)	4 wk
PVPC-C-5073	(2)(5)(8)	4 wk
PVPC-C-5090	(2)(5)(8)	4 wk
PVPC-L-3029	(1)(6)	4 wk
PVPC-L-4046	(1)(7)	4 wk
PVPC-L-5073	(1)(8)	4 wk
PVPC-L-5090	(1)(8)	4 wk
Proportional pumps		
PVPC-CZ-3029	(6)	6 wk
PVPC-CZ-4046	(7)	6 wk
PVPC-CZ-5073	(8)	6 wk
PVPC-CZ-5090	(8)	6 wk
PVPC-LQZ-3029	(6)	6 wk
PVPC-LQZ-4046	(7)	6 wk
PVPC-LQZ-5073	(8)	6 wk
PVPC-LQZ-5090	(8)	6 wk
PVPC-PES-SP-NP-3029	(6)	6 wk
PVPC-PES-SP-NP-4046	(7)	6 wk
PVPC-PES-SP-NP-5073	(8)	6 wk
PVPC-PES-SP-NP-5090	(8)	6 wk
PVPC-PERS-SP-NP-3029	(6)	6 wk
PVPC-PERS-SP-NP-4046	(7)	6 wk
PVPC-PERS-SP-NP-5073	(8)	6 wk
PVPC-PERS-SP-NP-5090	(8)	6 wk
Options and notes		
(1) Version R - remote pressure control		8 wk
(2) Version CH - venting		8 wk
(3) Version LW - constant power		12 wk
(4) Version LW - constant power		12 wk
(5) Version LW - constant power		12 wk
(6) Version XA and XB - coupling SAE A and B		12 wk
(7) Version XA and XB - coupling SAE A and B		12 wk
(8) Version XA, XB and XC - coupling SAE A, B and C		12 wk
Version /5 - splined shaft		12 wk
Version /S - counterclockwise rotation		12 wk

Pumps are supplied with black painting RAL 9005

Special net prices for quantities available on request

Components highlighted in yellow can be delivered in 2 weeks with 15% surcharge

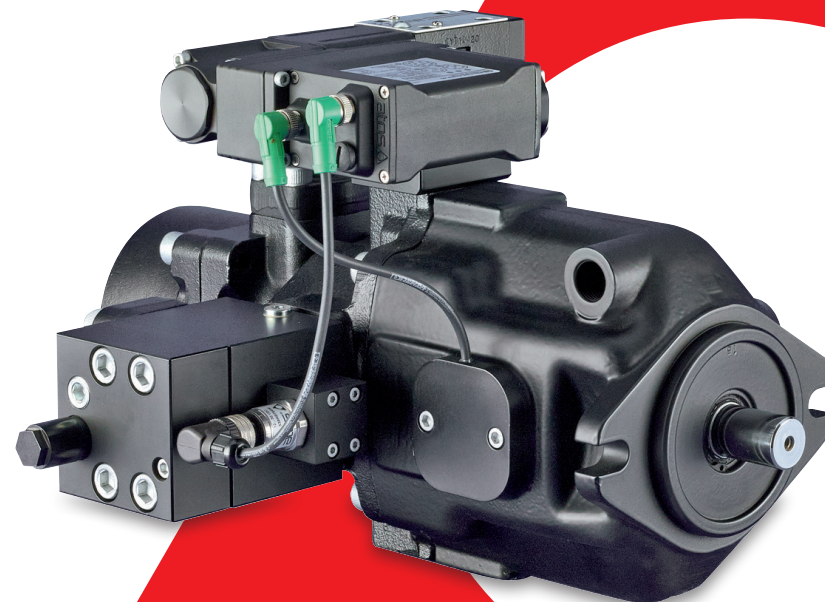
Atos spa - Sesto Calende - Italy

info@atos.com

www.atos.com

DMLieferant +7 (499) 990-05-50, +7 (800) 775-29-59 info@dmliefer.ru dmliefer.ru

atos®
the Italian electrohydraulics



PVPC axial piston pumps

variable displacement from 29 to 88 cm³/rev
max pressure 280/350 bar

full range of mechanical & digital proportional controls



PVPC axial piston pumps variable displacement/flow. Atos axial piston pumps have been engineered for high-pressure industrial applications with low noise levels and long service life. The full line of mechanical and proportional controls allow energy saving installations. The digital PERS versions provides precise control of flow and pressure for high dynamic applications. For detailed info see tech. tables A160 & AS170 on Atos catalog on-line.

Operating characteristics

models	max displacement	max pressure bar		max flow at 1450 rpm	power at 1450 rpm, max P and Q	speed range
	cm ³ /rev	P _{max}	P _{peak}	l/min	kW	rpm
PVPC -*-3029	29	280	350	42	20	500 ÷ 3000
PVPC -*-4046	46	280	350	67	32	500 ÷ 2600
PVPC -*-5073	73	280	350	106	50	500 ÷ 2600
PVPC -*-5090	88	250	315	127	54	500 ÷ 2200

Pumps are supplied with black painting RAL 9005 - SAE standard mounting flange - ISO mounting flange on request

Model code

PVPC	-	PERS - SP	-	BC	-	4	-	O46
Axial piston variable displacement						Max displacement (cm³/rev) 29 46 73 90		Pump size 3 4 5

Mechanical controls

- C = manual pressure compensator
- CH = manual pressure compensator with venting
- R = remote pressure compensator
- L = load sensing - pressure & flow
- LW = constant power - combined pressure & flow

Proportional controls - open loop

- CZ = proportional pressure control
- LQZ = proportional flow control

P/Q digital proportional controls - closed loop

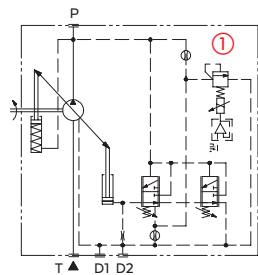
- PES-SP = digital P/Q control with integral driver
- PERS-SP = as PES plus sequence module to allow pressure regulation down to 0 bar

Displacements 35 & 53 cm³/rev on request

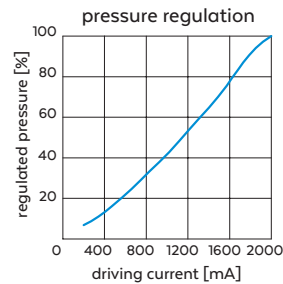
Proportional pressure control - open loop



PVPC-CZ



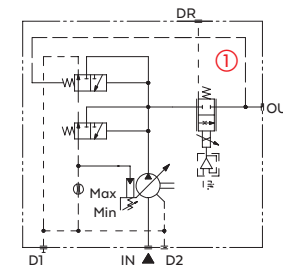
① proportional pressure pilot valve



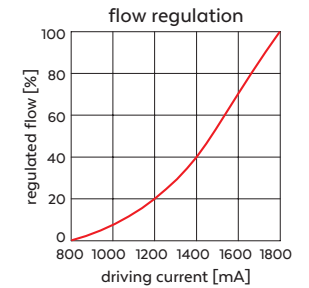
Proportional flow control - open loop



PVPC-LQZ



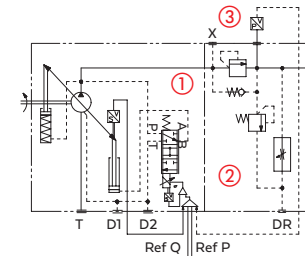
① proportional flow control valve



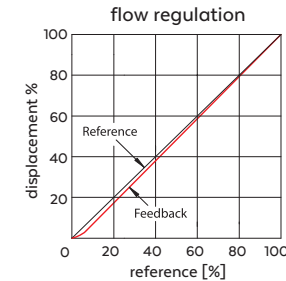
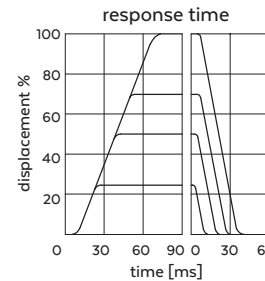
P/Q digital proportional control - closed loop



PVPC-PERS



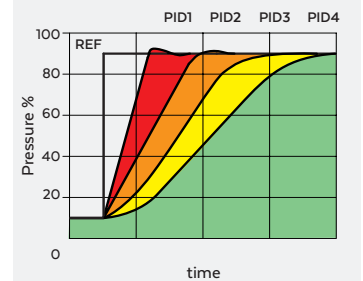
- ① servoproportional valve with integral P/Q controller
- ② sequence module
- ③ pressure transducer



Multiple pressure PID

Digital PES / PERS pumps are provided with 4 pressure PID's configurations to optimize the pressure dynamic response in different hydraulic conditions. PID's configuration is real time selectable during the working cycle.

pressure dynamic response



Multiple pumps

PVPC pumps are also available with option XA, XB, XC for coupling with a second piston pump type PVPC or fixed vane type PFE.



PVPC-4046XB + PVPC-3029



PVPC-4046XA + PFE