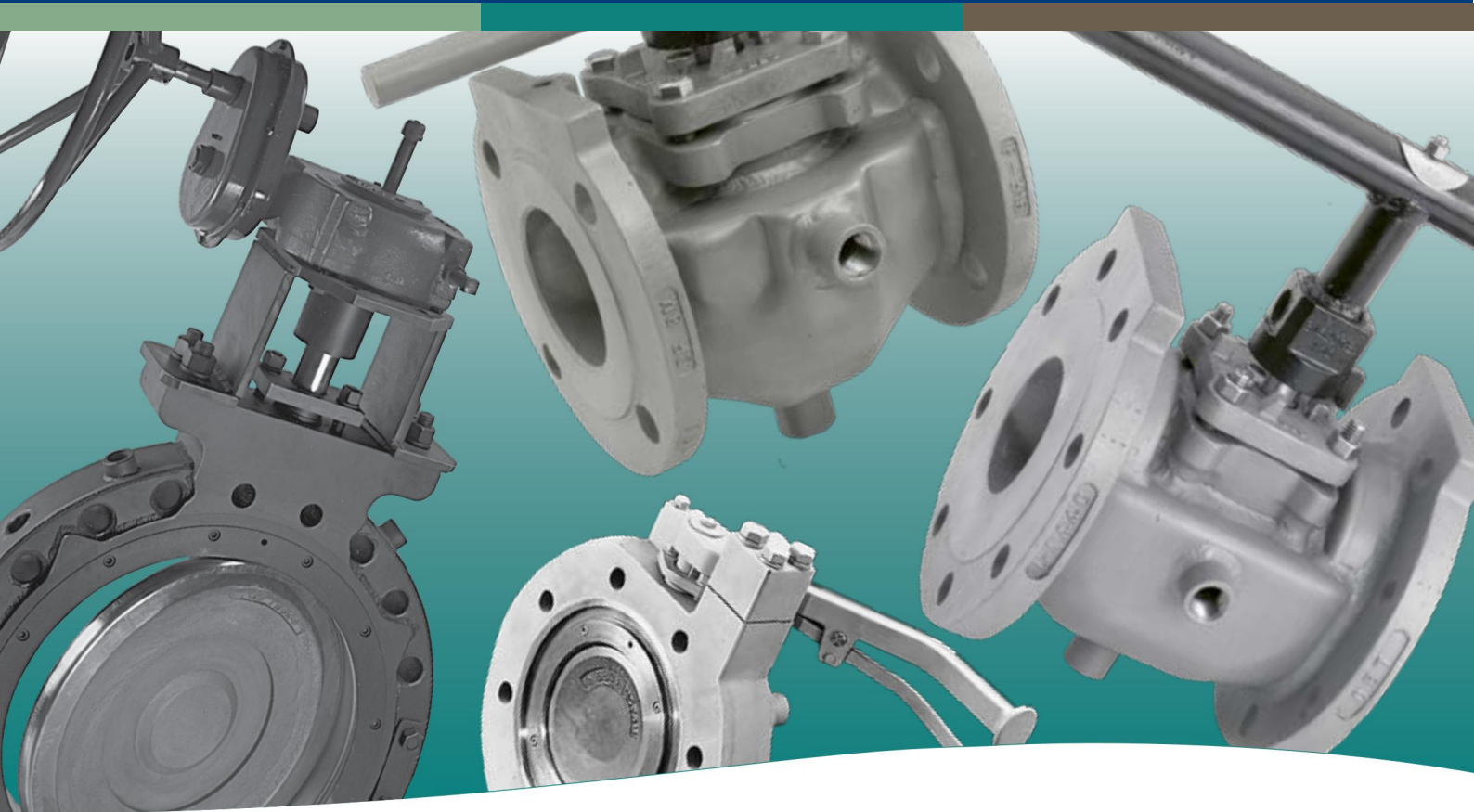


# XOMOX<sup>®</sup>

brands you trust.



Tufline<sup>®</sup> Jacketed Valves

**CRANE**<sup>®</sup>

ChemPharma Flow Solutions

[www.cranechempharma.com](http://www.cranechempharma.com)

# Innovative valves for critical temperature control.

Choose from a broad range of Tuflin<sup>®</sup> valves specifically designed for handling temperature-sensitive fluids.

	Page
Jacketed Sleeved Plug Valves .....	3
Jacketed Metal Seated Plug Valves .....	6
Steam Traced Butterfly Valves .....	8
Jacketed Rail Tank Car Butterfly Valves .....	11
Matryx <sup>®</sup> Actuators Service Centers Special Products .....	14



## Worldwide capabilities pay off for Tuflin customers.

With facilities in a dozen countries around the world, Xomox has unique capabilities for global sourcing of the latest technologies, innovative materials, and the most sophisticated manufacturing techniques.

The Xomox team turns these resources into problem-solving valves for your most demanding applications.



## Knowledgeable people.

The Xomox team works with you to assure optimum valve performance.

Your Xomox support team includes Sales Engineers, Authorized Distributors, Service Center Technicians, and Application Specialists.



## Problem solvers.

Talk with a Xomox Sales Engineer about any aspect of your fluid handling system. You will get process-improving answers.

Your Xomox Sales Engineer has the proven products and is backed by the technical expertise to help solve your toughest fluid handling problems.



## Customer focus, customer satisfaction.

Xomox strives to fully understand your unique needs, and cost-effectively fulfill your requirements.

Processors know they can depend on Xomox for trouble-free fluid control equipment and superior service.

© Copyright Xomox Corporation 1965, 2009. All rights reserved. Xomox<sup>®</sup>, Tuflin<sup>®</sup>, and Matryx<sup>®</sup> are registered trademarks of Xomox Corporation. XRP<sup>™</sup> is a trademark of Xomox Corporation.

# Jacketed Sleeved Plug Valves



## Tufline Jacketed Sleeved Plug Valves offer all the attributes of Standard Tufline Sleeved Plug Valves.

360° lips break up and remove adhering, scaly deposits from the outer surface of the plug as it rotates.

Tufline Sleeved Plug Valves provide superior sealing, exceptional emissions control, ease of automation, and long-term reliability . . . all at a standard valve price.

For superior in-line sealing, the locked-in PTFE sleeve completely surrounds the plug. Tight sealing is assured because of the concentrated compression of the sleeve's large circumferential sealing surface against high-pressure ribs.

Tufline Sleeved Plug Valves provide primary and secondary sealing elements to prevent leakage along the stem to the atmosphere.

These valves can be operated with simple, standard quarter-turn actuators. Because of the lubricity of the PTFE sleeve, they open and close easily, even after not being operated for greatly extended periods of time.

No. of Ports	Jacket Type	ANSI Class	Size Range	Operator	Figure Number
2	Partial Jacket	150	1 - 4	Wrench	067PJ
			4 - 12	Enclosed Gear	067PJ-EG
		300	1 - 4	Wrench	0367PJ
			4 - 12	Enclosed Gear	0367PJ-EG
	Full Jacket	150	2x1x2 - 6x4x6	Wrench	067FJ
			6x4x6 - 12x10x12	Enclosed Gear	067FJ-EG
		300	2x1x2 - 6x4x6	Wrench	0367FJ
			6x4x6 - 12x10x12	Enclosed Gear	0367FJ-EG
3	Partial Jacket	150	1 - 4	Wrench	037PJ
			4 - 12	Enclosed Gear	037PJ-EG
		300	1 - 4	Wrench	0337PJ
			4 - 12	Enclosed Gear	0337PJ-EG

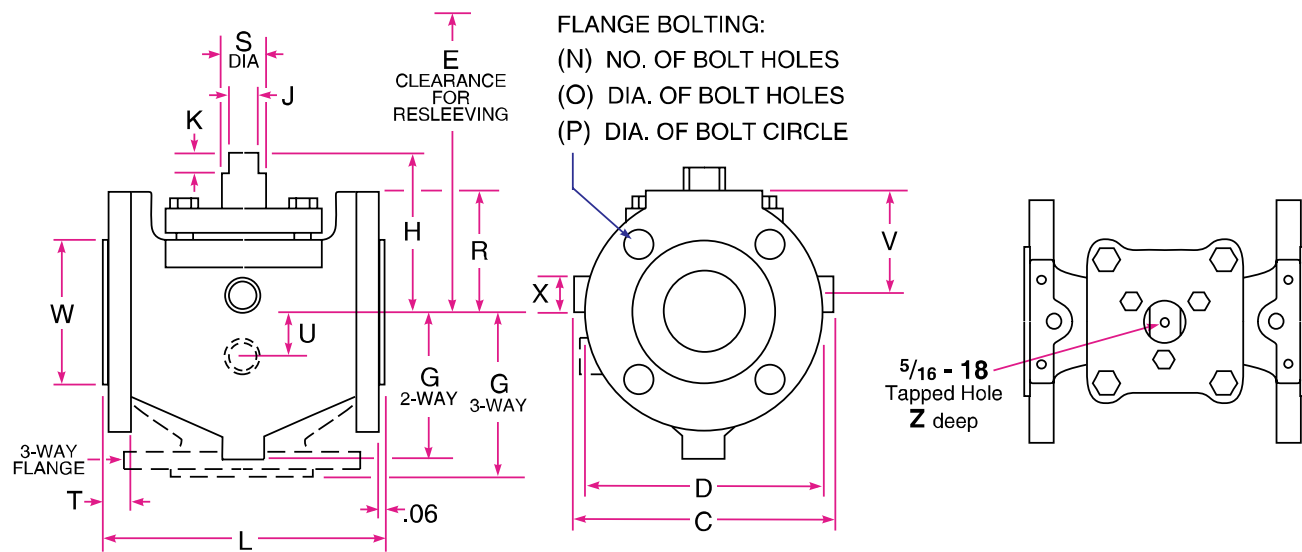
All jackets are rated at 235 psi to 400°F. Standard jacketed valve bodies are available in carbon steel or 316 stainless steel.

Dimensional data is on the following page.

# Jacketed Sleeved Plug Valve Dimensions Dimensions are in inches. Weights are in pounds.

For actuator mounting dimensions, other additional dimensions, and full specifications, see the Tuflne Sleeved Plug Catalog #329703.

Additional information is also available at [www.xomox.com](http://www.xomox.com). You can also contact your nearest Xomox representative.



## Partial Jacket - Class 150 . . . 2-Way: Figure No. 067PJ . . . 3-Way: Figure No. 037PJ

Size	L	D	W	C	T	R	N	O	P	H	S	J	K	E	V	X**	U 3-Way	G 2-Way	G 3-Way	Weight 2-Way	Weight 3-Way
1	5.00	4.25	2.00	4.80	.44	2.13	4	.63	3.13	2.50	.63	.438	.32	7.00	2.72	3/8	-	3.04	3.50	8.5	11
1½	6.50	5.00	2.88	6.22	.56	2.50	4	.63	3.88	3.06	.88	.563	.44	8.00	2.66	½	-	3.54	4.13	16	20
2	7.00	6.00	3.63	7.00	.63	3.00	4	.75	4.75	3.56	1.13	.750	.53	9.13	3.28	½	-	4.01	4.50	24	30
2½†	8.00	7.50	4.13	7.86	.75	3.75	4	.75	5.50	4.13	1.13	.750	.53	10.13	3.22	½	-	4.70	5.13	36	47
3	8.00	7.50	5.00	7.86	.75	3.75	4	.75	6.00	4.13	1.13	.750	.53	10.13	3.22	½	1.47	4.70	5.13	36	47
4	9.00	9.00	6.19	9.76	.94	4.63	8	.75	7.50	5.22	1.25	.875	.78	22.00	4.10	½	3.47	5.51	6.00	62	77
6	10.50	11.00	8.50	9.94	1.00	5.50	8	.88	9.50	7.35	2.00	1.389	1.00	25.00	4.35	1	4.85	6.86	7.50	105	129
8	11.50	13.50	10.63	10.58	1.13	6.75	8*	.88	11.75	9.32	2.00	1.389	1.00	28.00	3.05	1	-	8.68	9.00	190	-
10	13.00	16.00	12.75	13.99	1.19	8.00	12*	1.00	14.25	10.81	2.50	1.673	1.00	29.00	7.38	1	-	9.18	11.00	280	-
12	14.00	19.00	15.00	13.99	1.25	9.50	12*	1.00	17.00	11.81	3.00	1.968	1.00	35.00	7.77	1	-	11.27	-	380	-

## Partial Jacket - Class 300 . . . 2-Way: Figure No. 0367PJ . . . 3-Way: Figure No. 0337PJ

Size	L	D	W	C	T	R	N	O	P	H	S	J	K	E	V	X**	U 3-Way	G 2-Way	G 3-Way	Weight 2-Way	Weight 3-Way
1	6.50	4.88	2.00	4.80	.69	2.44	4	.75	3.50	2.50	.63	.438	.32	7.00	3.03	3/8	-	3.04	3.75	13	17
1½	7.50	6.13	2.88	6.22	.81	3.06	4	.88	4.50	3.06	.88	.563	.44	8.00	3.22	½	-	3.54	4.38	24	32
2	8.50	6.50	3.63	7.00	.88	3.25	8	.75	5.00	3.56	1.13	.750	.53	9.13	3.53	½	-	4.01	4.75	32	41
2½†	11.13	8.25	4.13	7.86	1.13	4.13	8	.88	5.88	4.13	1.13	.750	.53	10.13	3.60	½	-	4.70	5.56	43	58
3	11.13	8.25	5.00	7.86	1.13	4.13	8	.88	6.63	4.13	1.13	.750	.53	10.13	3.60	½	1.47	4.70	5.56	43	58
4	12.00	10.00	6.19	9.76	1.25	5.13	8	.88	7.88	5.22	1.25	.875	.78	22.00	4.60	½	3.47	5.51	6.75	88	113
6	15.88	12.50	8.50	9.94	1.44	6.25	12	.88	10.63	7.35	2.00	1.389	1.00	25.00	5.10	1	4.85	6.86	8.50	175	217
8	16.50	15.00	10.63	10.58	1.63	7.50	12	1.00	13.00	9.32	2.00	1.389	1.00	28.00	3.80	1	-	8.68	-	282	-
10	18.00	17.50	12.75	13.99	1.88	8.75	16	1.13	15.25	10.81	2.50	1.673	1.00	29.00	8.13	1	-	9.18	-	415	-
12	19.75	20.50	15.00	13.99	2.00	10.25	16	1.25	17.25	11.81	3.00	1.968	1.00	35.00	8.52	1	-	11.27	-	565	-

\* On the valves where the "N" dimension is asterisked, the two top holes only are tapped as follows:  
8-inch valves: 3/4-10UNC-2B . . . 10-inch & 12-inch valves: 7/8-9UNC-2B

† 2½-inch valves are machined from 3-inch castings, but the flanges are machined to 2½-inch dimensions.

\*\* X - NPT - 3 steam ports.  
3-Way 1, 2, & 2½ inch valves have only 2 steam ports.



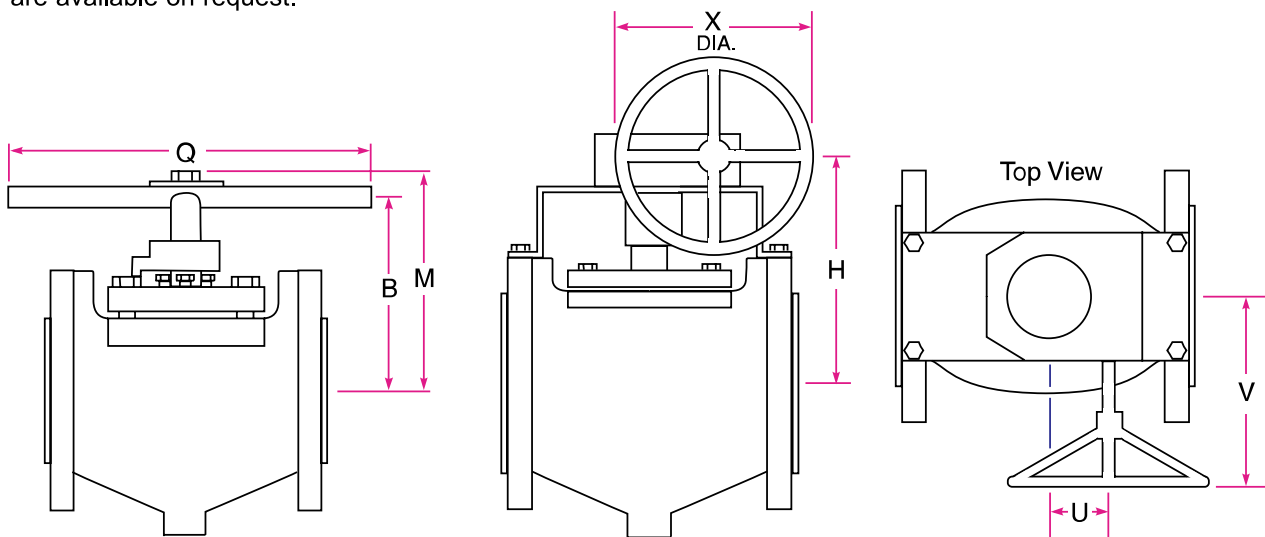
### Full Jacket - Class 150 . . . 2 Way: Figure No. 067FJ

Size	L	D	W	C	T	R	N	O	P	H	S	J	K	E	V	X	G 2-Way	Weight 2-Way
2 x 1 x 2	7.00	6.00	3.63	5.92	.62	3.00	4	.75	4.75	2.50	.63	.438	.32	7.00	3.16	1/2	3.15	22
2 1/2 x 1 1/2 x 2 1/2	7.50	7.00	4.13	6.44	.68	3.50	4	.75	5.50	3.06	.88	.563	.44	8.00	4.09	1/2	3.69	32
3 x 2 x 3	8.00	7.50	5.00	7.78	.75	3.75	4	.75	6.00	3.56	1.13	.750	.53	9.13	3.73	1/2	3.70	35
4 x 3 x 4	9.00	9.00	6.19	7.40	.94	4.63	8	.75	7.50	4.13	1.13	.750	.53	10.13	4.60	1/2	4.63	58
6 x 4 x 6	10.50	11.00	8.50	8.18	1.00	5.50	8	.88	9.50	5.22	1.25	.875	.78	22.00	5.43	1	5.77	102
8 x 6 x 8	11.50	13.50	10.63	9.56	1.13	6.75	8	.88	11.75	7.35	2.00	1.40	1.00	25.00	5.48	1	5.29	185
10 x 8 x 10	13.00	16.00	12.75	11.00	1.19	8.00	12	1.00	14.25	9.32	2.00	1.389	1.00	28.00	5.56	1	8.12	247
12 x 10 x 12	14.00	19.00	15.00	11.00	1.25	9.50	12	1.00	17.00	10.81	2.50	1.673	1.00	29.00	4.72	1	8.38	355

### Full Jacket - Class 300 . . . 2 Way: Figure No. 0367FJ

Size	L	D	W	C	T	R	N	O	P	H	S	J	K	E	V	X	G 2-Way	Weight 2-Way
2 x 1 x 2	7.50	6.50	3.63	5.92	.88	3.25	8	.75	5.00	2.50	.63	.438	.32	7.00	3.41	1/2	3.15	30
2 1/2 x 1 1/2 x 2 1/2	8.13	7.58	4.13	6.44	1.00	3.75	8	.88	5.88	3.06	.88	.563	.44	8.00	4.34	1/2	3.69	38
3 x 2 x 3	8.75	8.25	5.00	7.78	1.13	4.13	8	.88	6.63	3.56	1.13	.750	.53	9.13	4.11	1/2	3.70	42
4 x 3 x 4	9.63	10.00	6.19	7.40	1.25	5.00	8	.88	7.88	4.13	1.13	.750	.53	10.13	4.98	1/2	4.63	84
6 x 4 x 6	11.38	12.50	8.50	8.18	1.44	6.25	12	.88	10.63	5.22	1.25	.875	.78	22.00	6.18	1	5.77	170
8 x 6 x 8	12.50	15.00	10.63	9.56	1.63	7.50	12	1.00	13.00	7.35	2.00	1.40	1.00	25.00	6.23	1	5.29	265
10 x 8 x 10	16.50	17.50	12.75	13.50	1.88	8.75	16	1.12	15.25	9.32	2.00	1.389	1.00	28.00	5.50	1	8.94	377
12 x 10 x 12	18.00	20.50	15.00	11.50	2.00	10.25	16	1.25	17.75	10.81	2.50	1.673	1.00	29.00	5.57	1	10.25	508

Both larger and smaller sizes are available on request.



### Wrench & Enclosed Gear Operator Dimensions

These operator dimensions apply to fully jacketed 2-way and 3-way valves only. Partially jacketed valve operator dimensions are the same as a non-jacketed standard valves. See Catalog #329703.

Size	B	M	Q
2 x 1 x 2	6.50	7.43	12.00
2 1/2 x 1 1/2 x 2 1/2	7.12	8.05	16.00
3 x 2 x 3	7.88	9.01	24.00
4 x 3 x 4	8.44	9.50	24.00
6 x 4 x 6	9.60	10.91	36.00

Size	H	U	V	X
6 x 4 x 6	8.75	2.06	8.00	12.00
8 x 6 x 8	11.50	2.62	10.38	18.00
10 x 8 x 10	13.50	2.62	10.38	18.00
12 x 10 x 12	15.25	3.53	12.31	24.00

### More information.

In the Tuflin Sleeved Plug Valve catalog you will find:

- Pressure-temperature ratings
- Cv factors
- Operating torques
- Actuator mounting dimensions
- A comprehensive listing of options, body materials, plug materials, sleeve materials, and operators
- Comprehensive ordering guidelines

# Jacketed Metal-Seated Plug Valves



These valves are normally supplied non-lubricated with metal-to-metal hand lapped seating. There are no liners or separable seats in which fluids can lodge and degrade. Two, three, and four-way valves are available. Lubricated models are also available.

This extra heavy plug shank protects against damage from excessive torque.

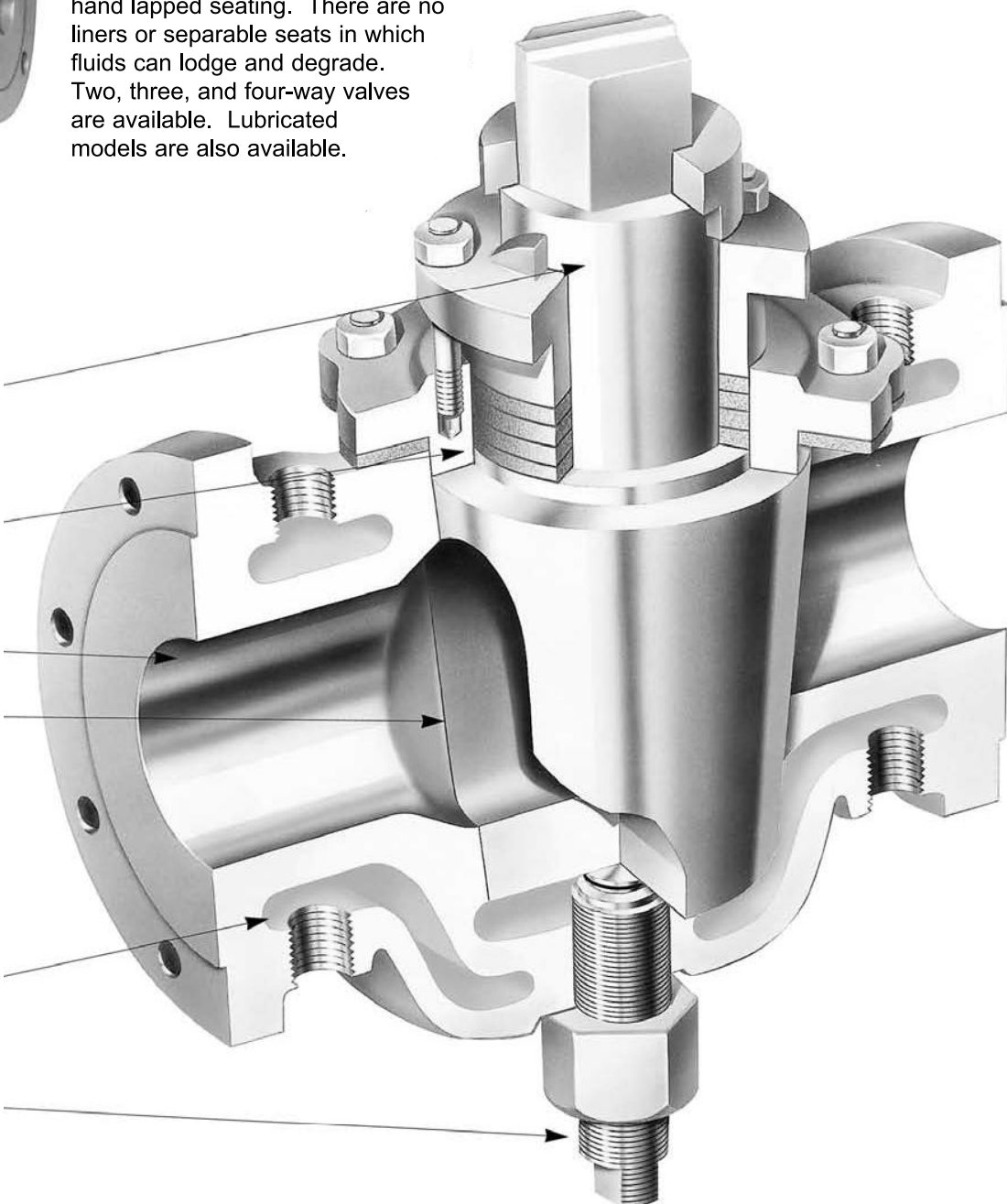
Extra deep stuffing boxes with more packing provide better sealing.

Smooth internal contours and 100% flow area minimize pressure drop.

A tight metal-to-metal seal.  
(Media must have a viscosity of 500 centipoise or greater to assure a tight seal.)

The full jacket extends from flange to flange and fully around all fittings. This maximum heat transfer area assures rapid consistent heating.

The external adjusting screw regulates plug seating and allows easy disassembly.



**Typical applications:**

pitch  
sulfur  
resins  
adhesives  
foods  
molten nylon  
polypropylene  
polyesters  
polymers

**Materials:**

WCB with stainless steel trim.  
Other materials available upon request.

**Pressure classes:**

ANSI B16.34 Classes 125, 150, and 300 are standard. Other classes are available upon request.

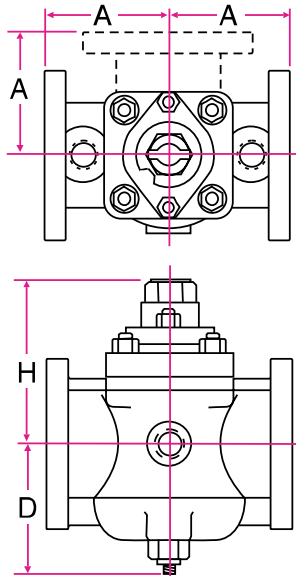
**Temperature rating:** Up to 650°F.

**Sizes:**

1-inch to 8-inches are standard.  
Other sizes available.

**Operators:**

Wrench handle to 4 inches.  
Geared, 6 inches and above.  
Air and electric actuation available.

**Dimensional Data (inches)****Class 125 & 150, 2-Way Valves**

Size	A	D	H
1 x 2	4.50	4.88	5.44
1 1/4 x 2	4.50	4.88	5.44
1 1/2 x 2 1/2	5.00	5.50	6.38
2 x 3	5.50	6.12	7.25
3 x 4	6.50	8.38	9.88
4 x 6	8.00	8.88	11.50
6 x 8	9.00	11.62	13.44
8 x 10	11.00	14.62	19.19

**Class 300, 2-Way Valves**

Size	A	D	H
1 x 2	4.62	4.88	5.44
1 1/4 x 2	4.62	4.88	5.44
1 1/2 x 2 1/2	5.25	5.50	6.38
2 x 3	5.75	6.12	7.25
3 x 4	6.75	8.38	9.88
4 x 6	8.31	8.88	11.50
6 x 8	9.44	11.62	13.44
8 x 10	11.50	14.62	19.19

**How to order:**

Specify size, figure no., CB, pressure class, material, operator, and any special features required.

Example:

2x3 - CB125 - WCB/316 - Wrench

**Valve type selection:**

Within its temperature and pressure limits the jacketed sleeved plug valve performs better than the metal seated valve. The chart at the right shows the general operating parameters for both valve types.

Sleeved Plug Valves

.....  
Metal Seated Plug Valves.

