



Deburring/Precision Grinding/Edge Rounding/Polishing/Surface Optimization

Deburring Systems

High Precision Surface Finishing

BD 300-L

Latest Technology as Standard –
for outstanding Performance and Versatility



BD 300-L

Deburring System BD 300-L	
Max. work piece width [mm] (incl. work piece flip over device)	270 125
Max. work piece height [mm]	50 (other heights on demand)
Burr-Ex ® brush deburring modules [pcs.]	1 or 2 (more modules on demand)
• drives [kW]	• 5.5
• brush-speed [RPM]	• 300–3000
• workhead speed [RPM]	• 12–300
• brush deburring units per module [pcs.]	• 5
• Ø of brushes [mm]	• 150
Speed of transport belt [m/min]	0.5–10
Controls	Siemens Touch Panel
Dimensions (H x W x D) [mm]	2400 x 3050 x 1600
Weight in kg [2 stations]	3100

(Technical data is subject to modification)



View into the working area

PETER WOLTERS Deburring Systems

Comprehensive System Solutions –
Highest Precision for all Materials and Industries

PETER WOLTERS: High Precision System Solutions

Ideas – Drive – Flexibility – Commitment. That's exactly what makes the PETER WOLTERS Group a world leader in the field of manufacturing Single- and Double-Wheel Fine Grinding, Lapping, Polishing, Flat Honing and Deburring Machines for flat work pieces.

PETER WOLTERS meets market requirements with a wide range of new, innovative products, offering its customers trend-setting solutions, since 1804. Products for Today and Tomorrow.

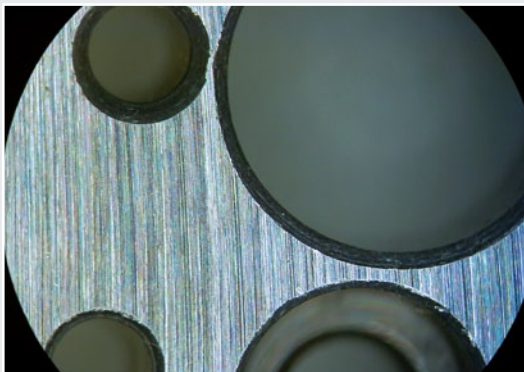
Linear-Finishing-Deburring-System BD 300-L

PETER WOLTERS has impressively demonstrated, with the newly developed Linear-Finishing Deburring system BD 300-L, that it is possible to enter the world of highly

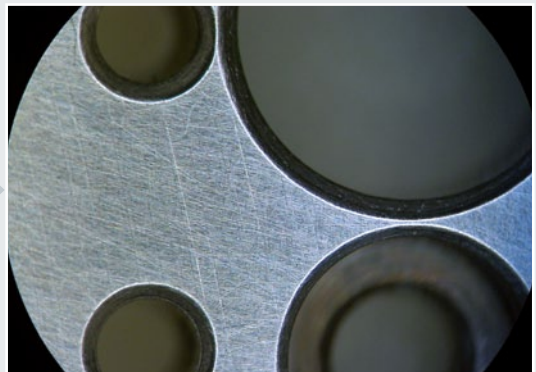
accurate and economic deburring of flat work pieces with reasonable investment costs.

The BD 300-L offers an excellent performance never before reached in this price-performance class. Examples of this are the two machining stations, each equipped with five BOTECH brush tools. An ideal transformation ratio between brushes and head ensures constant and optimal deburring results.

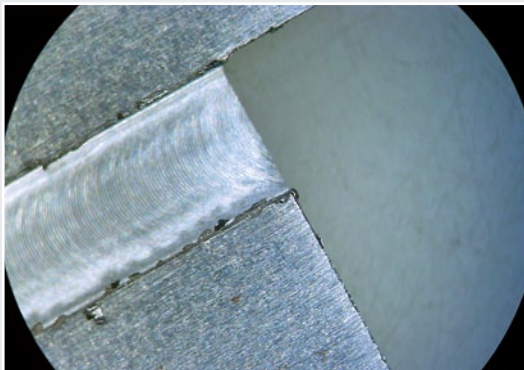
In the area of flexible single-part production and production of small to medium series, the BD 300-L is optimally suited for cost-effective machining of, for example, punched and precision cut parts, valve plates and precision work pieces.



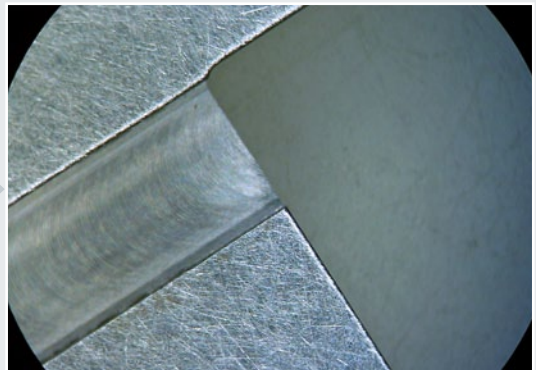
unmachined



machined



unmachined



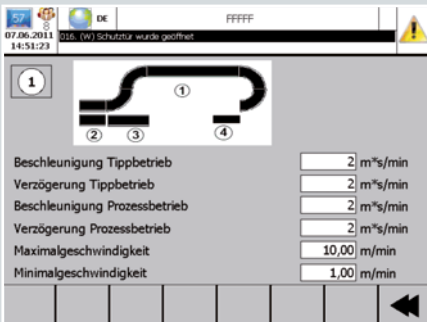
machined

Detail view of work piece surface quality compared before and after machining with the BD 300-L

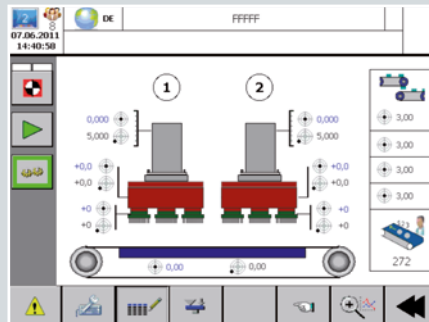
BD 300-L

Machine Features and Customer Benefits at a Glance:

Machine Features	Customer Benefits
Modern and stable welded structure of base and working stations	High stiffness and process precision, long machine life, excellent vibration damping
Steel elements in wet room are coated, further components in non-corrosive materials	High up-time, low operating cost
Special machine bed design that enables fast exchange of main transport conveyor-belt	Efficient, ergonomical machine design
Quick Coupler System	Very quick tooling exchange
Siemens 10" Multipanel	User friendly due to self explaining icons
Modern, ergonomic construction	Very good accessibility, very easy to service, safe and simple operation
Easy to access, low maintenance design	Low operating costs
Market-leading PETER WOLTERS process- and technology-know-how	Individual process development ensures highest productivity



User friendly due to self explaining icons



Burr-Ex® Finishing unit



BD 300-L with flip-over device (optional)

BD 300-L

Modular Concept for customized Solutions



For highest productivity:
BD 300-L with flip-over device and preceding DDG 450

The BD 300-L can either be supplied as stand-alone solution or – for further increase of productivity – as semi and fully automated setups combined with any other PETER WOLTERS machine (e.g. a double-disk surface grinding machine from the DDG range). Each version follows a modular concept and can be adapted to our customers' needs.

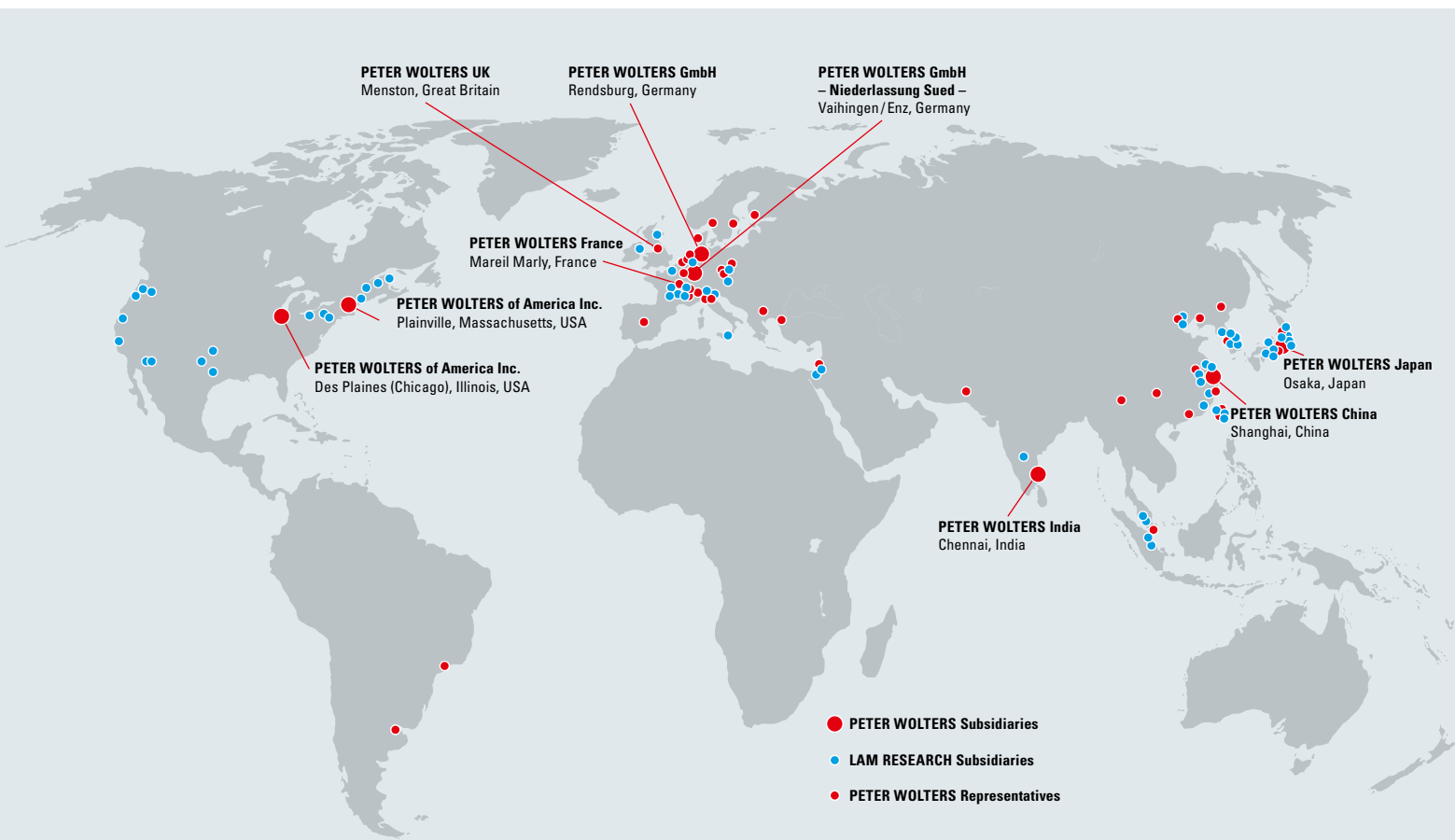
Typical Applications



Fine blanked and stamped parts



Precision parts



PETER WOLTERS Worldwide

PETER WOLTERS GmbH

Buesumer Strasse 96
24768 Rendsburg
Germany
Phone: +49 4331 458-0
Fax: +49 4331 458-290
E-mail: info@peter-wolters.com

PETER WOLTERS GmbH

– Niederlassung Sued –
Robert-Koch-Strasse 12
71665 Vaihingen/Enz, Germany
Phone: +49 7042 8359-0
Fax: +49 7042 8359-10
E-mail: pww@peter-wolters.com

PETER WOLTERS France

Philippe Lucas
38, Rue du Belvédère
78750 Mareil Marly, France
Phone: +33 1 39 58 48 11
Fax: +33 1 39 58 48 66
E-mail: p.lucas@peter-wolters.com

PETER WOLTERS UK

David Ross
19, Viewlands Mount, Menston, Ilkley,
West Yorkshire, LS29 6BJ, Great Britain
Phone: +44 1943 872050
Fax: +44 1943 872050
E-mail: d.ross@peter-wolters.com

PETER WOLTERS of America Inc.

509 N. Third Avenue
Des Plaines (Chicago)
IL 60016 - 1196, USA
Phone: +1 847 803 3200
Fax: +1 847 803 9875
E-mail: pwa_sales@peter-wolters.com

PETER WOLTERS of America Inc.

P.O. Box 1585/14 High Street
Plainville
Massachusetts 02762, USA
Phone: +1 508 695 7151
Fax: +1 508 695 7154
E-mail: pwa_sales@peter-wolters.com

PETER WOLTERS Japan Co., Ltd.

Daisho Bldg., 6th floor, Room 601
12-28, Esaka-cho 1-chome
Suita-shi, Osaka 564-0063, Japan
Phone: +81 6 6821 7024
Fax: +81 6 6821 7031
E-mail: pwj_sales@peter-wolters.com

PETER WOLTERS GmbH Shanghai Office

Unit 10 SOHO Building, 439 Chun Xiao Road
Pudong New Area
Shanghai 201203, P.R. China
Phone: +86 21 5080 2056
Fax: +86 21 5080 2953
E-mail: pwcn_sales@peter-wolters.com

PETER WOLTERS Precision Solutions (India) Pvt. Ltd.

7/17, G.S.T. Road
St. Thomas Mount
Chennai - 600 016, India
Phone: +91 44 2233 3451/3452
Fax: +91 44 2233 3453
E-mail: g.ramesh@peter-wolters.com