

## MSUD DOUBLE VALVE PLUG FORM A 18MM

PVC 4X0.75 black 10m

Form A (18 mm)

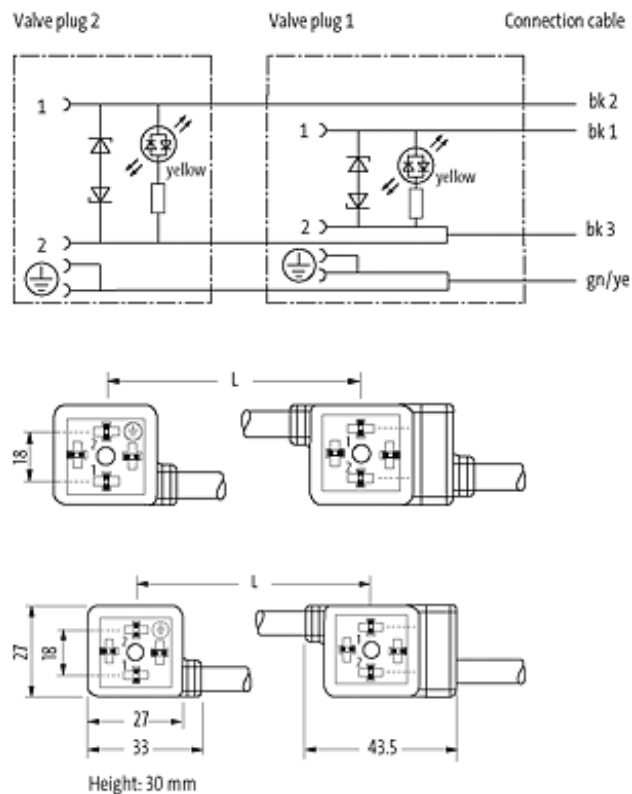
LED and suppression

Connection cable L = 150 mm

Further cable lengths on request. Plastic housings with good resistance against chemicals and oils. The resistance to aggressive media should be individually tested for your application. Further details on request.

### [Link to Product](#)

#### Illustration



Product may differ from image

Product may differ from image

### Approvals



### Form

Form 58021

### Technical Data

|                               |                                    |
|-------------------------------|------------------------------------|
| Operating voltage             | 24 V AC $\pm 20\%$ / DC $\pm 25\%$ |
| Operating current per contact | max. 4 A                           |
| Switch off peak               | max. 55 V                          |
| Switch off delay time         | max. 20 ms                         |
| Locking of ports              | M3 (recommended torque 0.4 Nm)     |
| Housing                       | Black plastic (gray on request)    |

### Cables

|                             |                                 |
|-----------------------------|---------------------------------|
| Cable number                | 617                             |
| No./diameter of wires       | 4 $\times$ 0.75 mm <sup>2</sup> |
| Wire isolation              | PVC (bk num, gnye)              |
| Jacket Color                | black                           |
| Shore hardness outer jacket | 80 $\pm$ 5A                     |
| Material (jacket)           | PVC                             |
| Outer $\emptyset$           | approx. 6.5 mm                  |
| Bend radius (fixed)         | 5 $\times$ outer $\emptyset$    |
| Bend radius (moving)        | 10 $\times$ outer $\emptyset$   |
| Temperature range (fixed)   | -30...+70 °C                    |
| Temperature range (mobile)  | -5...+70 °C                     |

### General data

Temperature range -25...+85 °C, depending on cable quality

### Commercial data

|                        |          |
|------------------------|----------|
| country of origin      | CZ       |
| customs tariff number  | 85444290 |
| minimum order quantity | 1        |