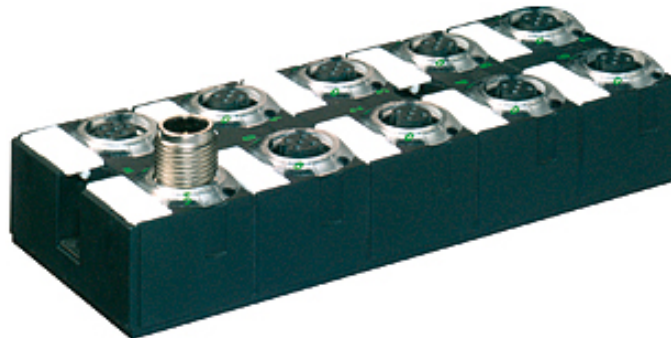


Cube67 I/O extension module 16 digital inputs

Expansion module
DI16 - (E) p-switching (8×M12)

Image

Vicarious picture

Internal communication

Module supply	via internal system connection (max. 2×4 A)
Current consumption	max. 50 mA
LED display	US: sensor supply and internal supply voltage (green: OK); UA: actuator supply (green: OK)

Input

Sensor supply US	24 V DC (EN 61131-2), max. 200 mA (M12 female), short-circuit and overload protected
Type	for 3-wire sensors or mechanical switches (EN 61131-2)
Input filter	1 ms

Parameterization

PIN 2	Input/diagnostic
PIN 4	Input

Diagnostic

Communication status	via LED
Diagnostic via LED	per module and channel
Diagnostic via BUS	per module and channel
Monitoring - under voltage	yes
Monitoring - no voltage	yes
Short circuit and overload	yes

General data

Protection	IP67
Temperature range	0...+55 °C (storage temperature -20...+75 °C)
Mounting method	2-hole screw mounting

Commercial data

Net weight	210
Weight unit	Gram
Basic unit	pc.
Customs tariff number	85176200
Unit (piece)	1
Minimum order quantity (piece)	1

Comments

Housing fully potted.
For connection cables please see chapter "Connection Technology"

All data on this data sheet was compiled carefully.
Liability regarding correctness, completeness, and actuality is limited to gross negligence. Created: 04/14

Dimension drawing

