

HAKI AB, Sibbhult, Sweden
www.haki.com

The HAKI Group

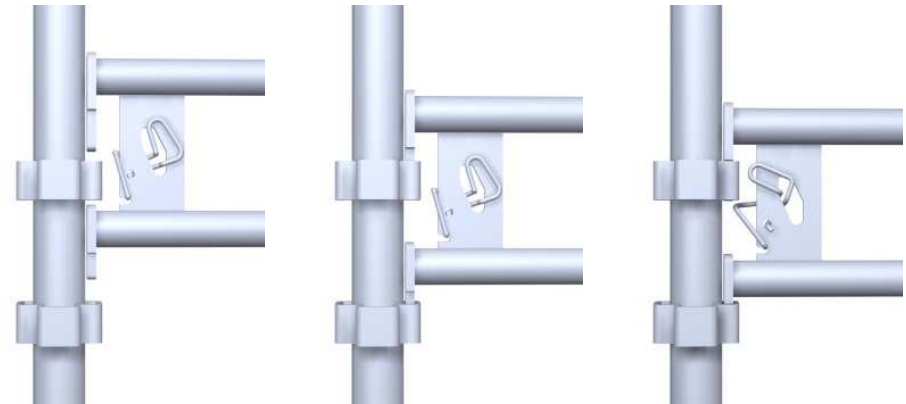
HAKI is a manufacturer of system scaffold and weather protection solutions. HAKI temporary work-places ensure the highest standard in safety whilst increasing productivity.

The unique HAKI “hook-on” product design offers distinct benefits in the most challenging environments:

- Oil & Gas projects (offshore & onshore)
- Processing industries
- Power industries
- Infrastructure projects
- Shipyards & shipbuilding
- Construction

Head-quartered in Sweden, HAKI has branches and partners around the world providing scaffolding solutions for over 50 years.

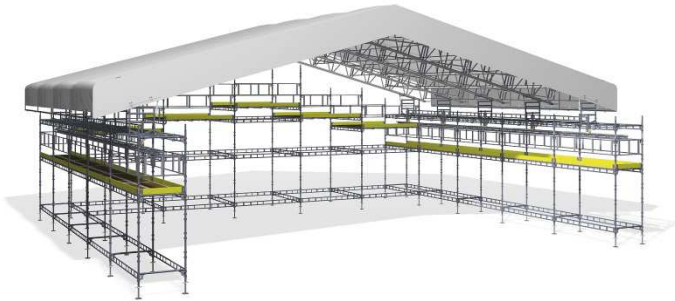
HAKI is part of the Midway Holding Group whose shares are traded on Nasdaq OMX Stockholm AB Small Cap exchange.



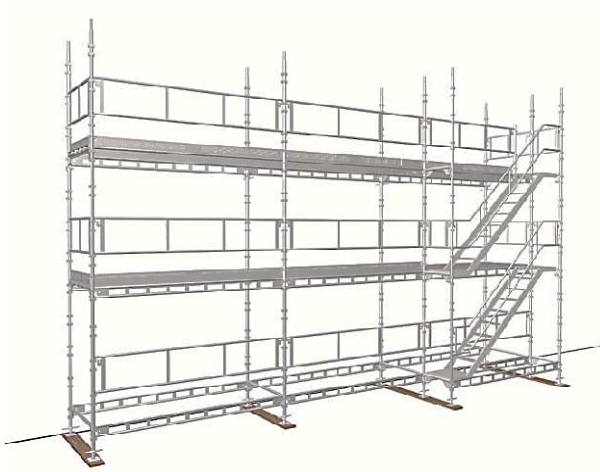
HAKI "hook-on" design concept



HAKI features and benefits



HAKITEC® weather protection



HAKI® Universal scaffolding

- **HAKI® Universal** scaffolding and **HAKITEC®** weather protection are the safest systems on the market
- **Adaptable** with maximum utilization of the same 7-10 basic components
- **Productive** with gains against other systems of at least 30%
- **Expert** with training, technical support and project engineered solutions

Decreased total project costs, fewer project delays, more satisfied clients, safer employees, increased financial returns



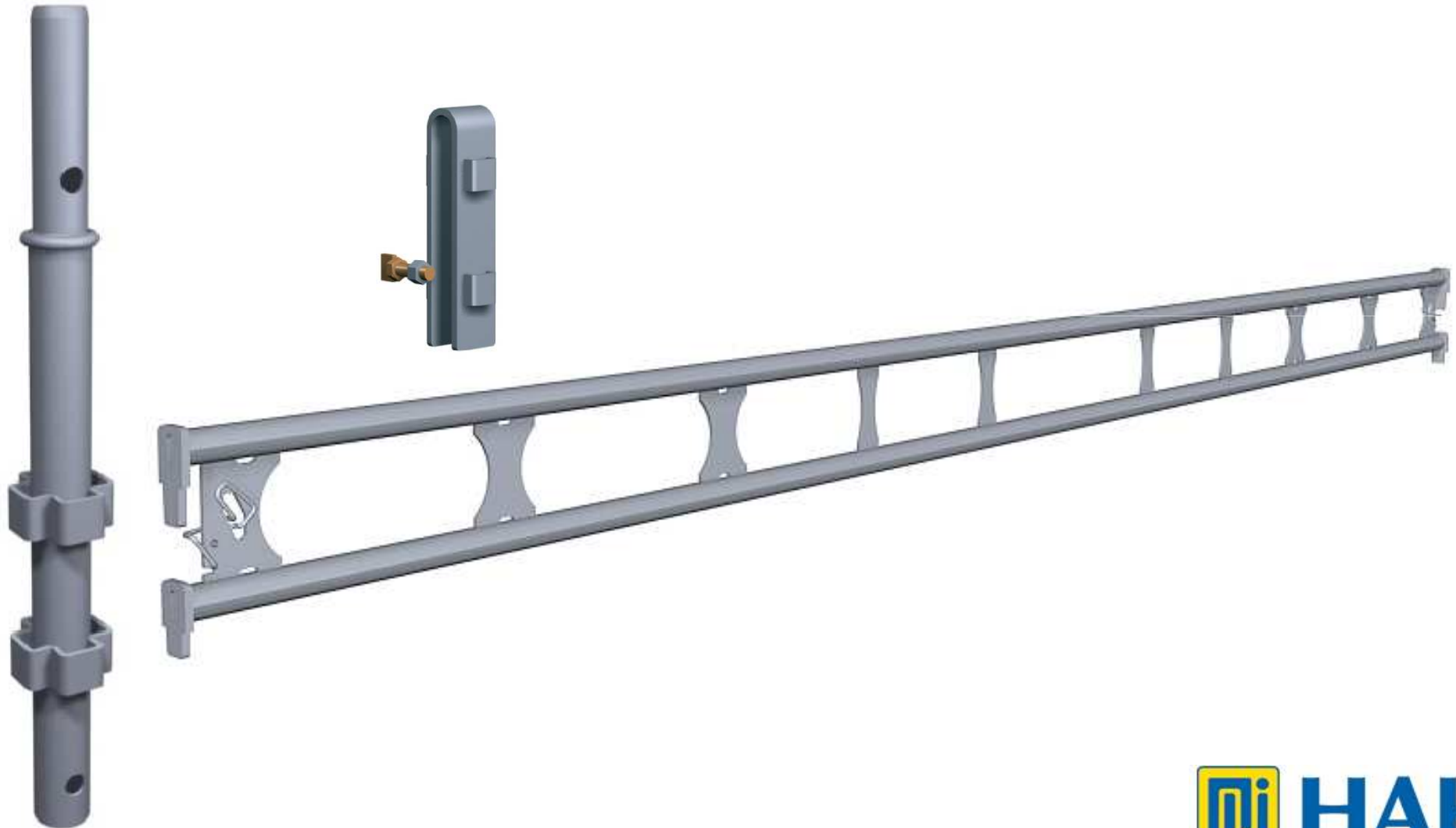


Unique features of HAKI Universal Scaffolding

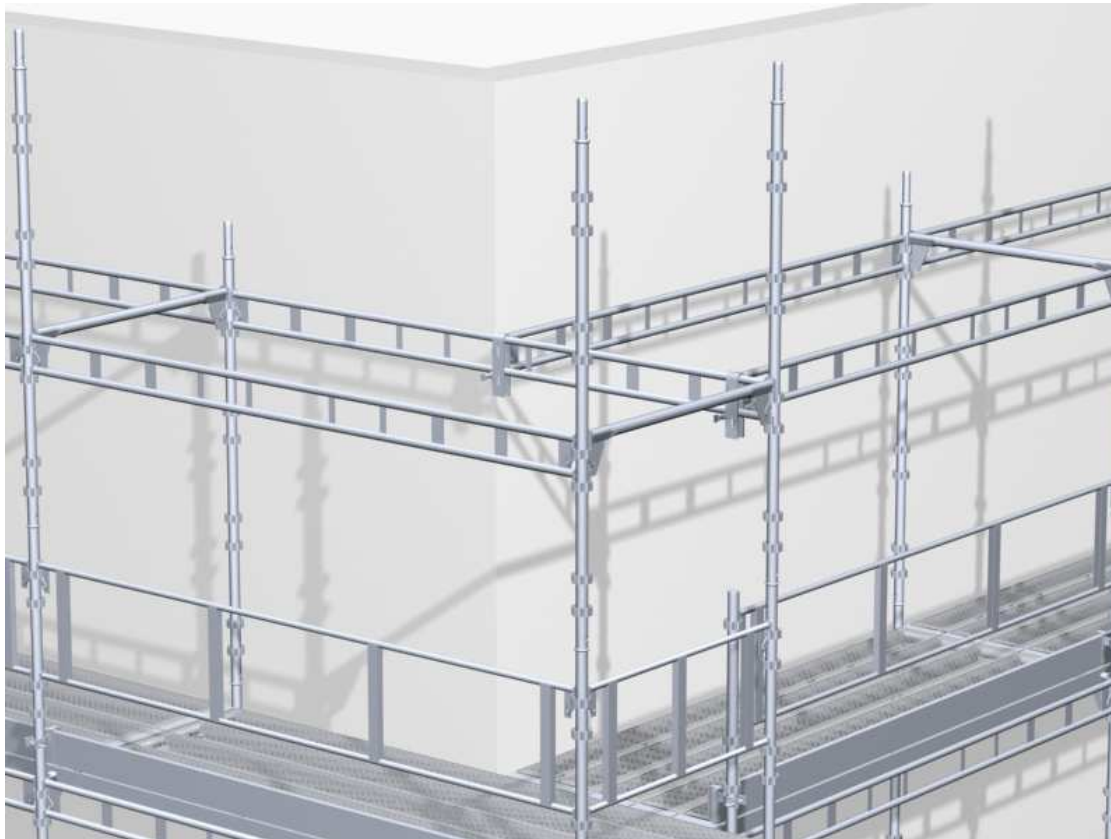
- **Load bearing ledger beam = maximum productivity and adaptability**
 - Allows off node connection for in-fills, returns and vertical connections
 - Means that large bay sizes can be utilized for maximum productivity
 - Larger bays mean fewer tie or contact points necessary to the structure
 - Easy to adapt for tricky situations
 - Allows use of traditional scaffold boards where required
- **Advanced guardrail system = maximum safety and productivity**
 - Full collective protection with no additional components or labour
 - Fast assembly and dismantling
- **Multifunctional components = maximum utilization and minimum investment**
 - Only 7 to 10 basic components required for majority of scaffolds
 - Same components utilized in Stair Towers, Loading Towers, Suspended Scaffolds, Beam Spans, Temporary Roofs, Temporary Buildings



Load Bearing Ledger Beam

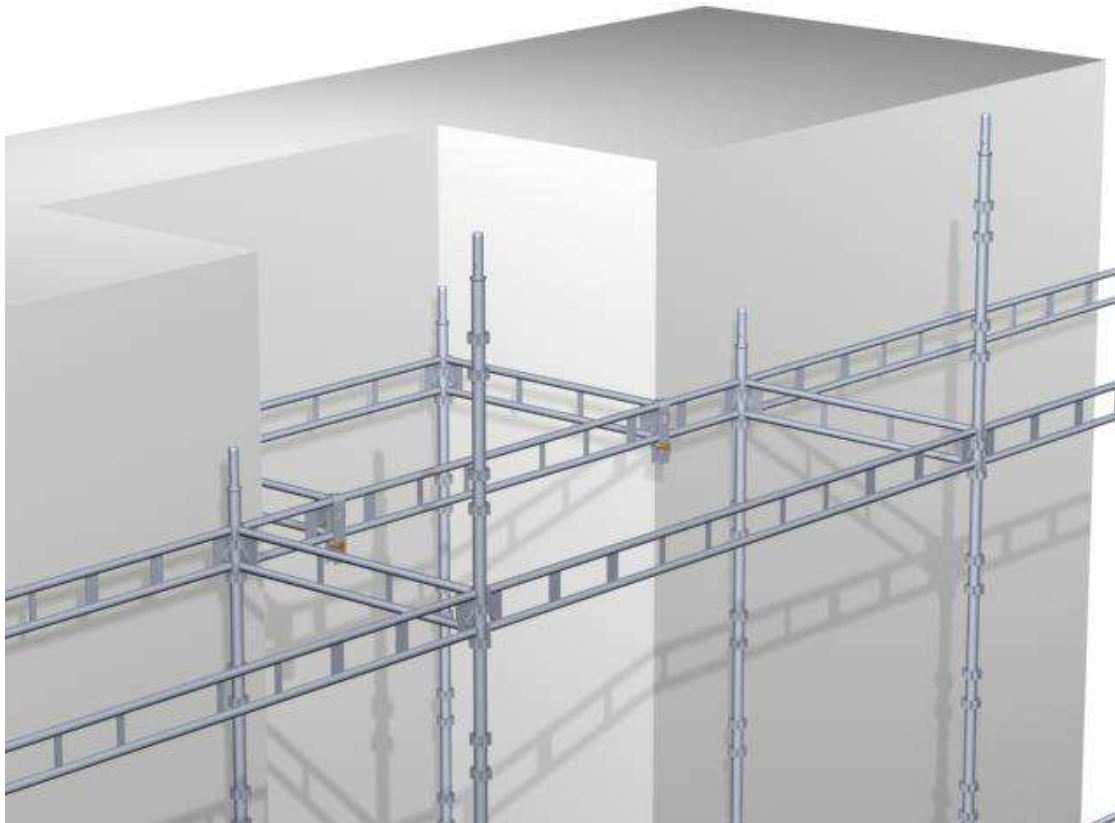


Load Bearing Ledger Beam



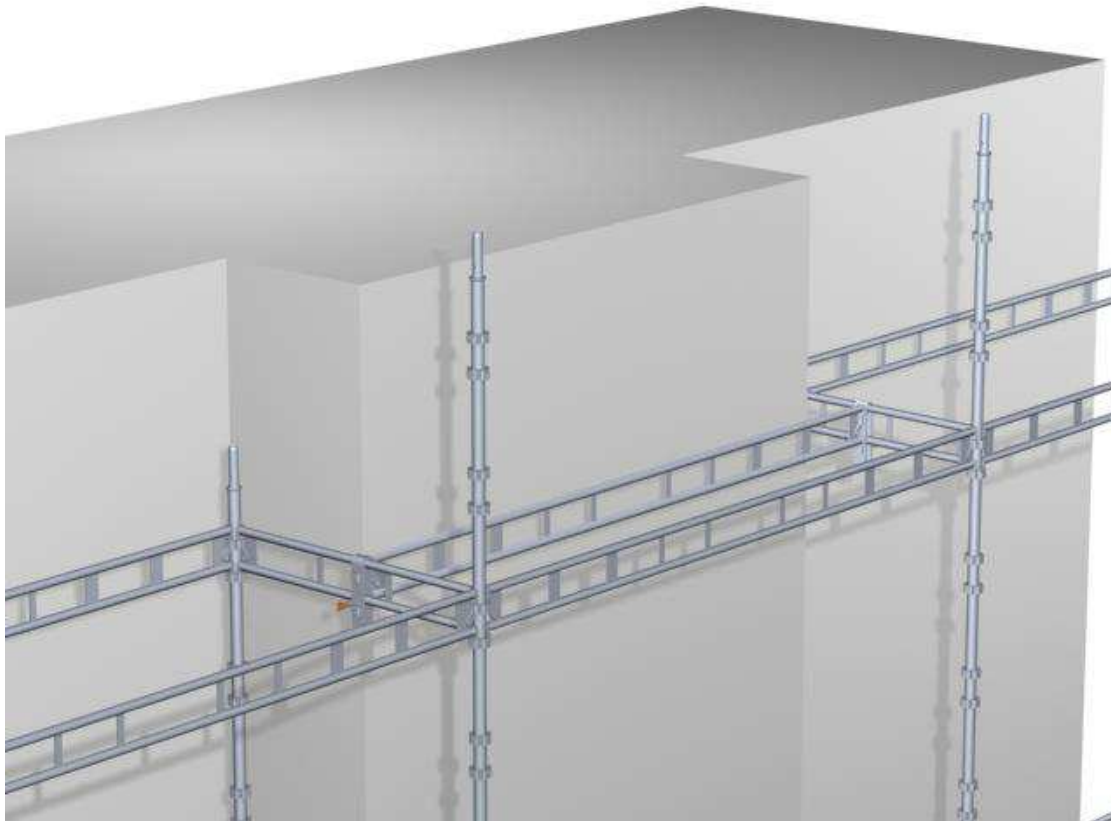
- Unique beam-rider allows “fly-past” at corners
 - Maximum productivity
 - Fewer components
 - Maximum adaptability
- Other systems require standards at every load-bearing point in the structure
 - Spacing becomes critical
 - Bay size is restricted

Load Bearing Ledger Beam



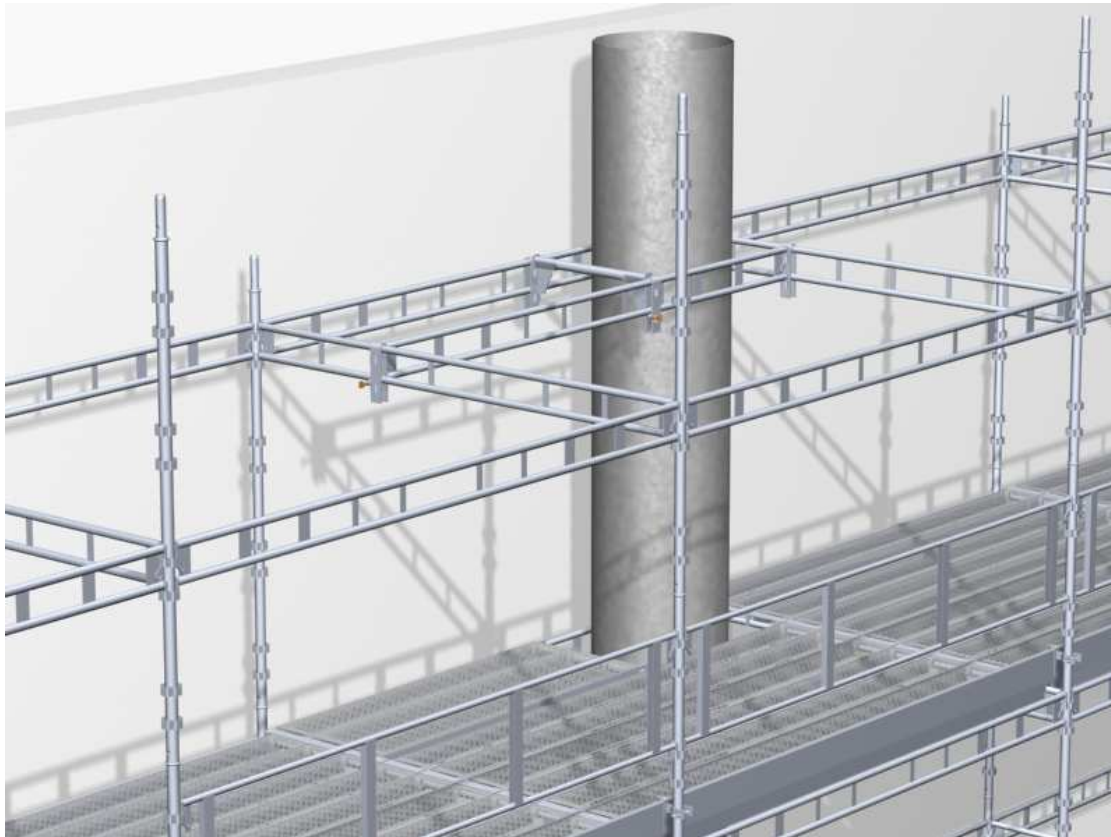
- Unique beam-rider allows easy returns and in-fills at any point in the structure
 - Maximum productivity
 - Fewer components
 - Maximum adaptability
- Other systems require standards at every load-bearing point in the structure
 - Spacing becomes critical
 - Bay size is restricted

Load Bearing Ledger Beam



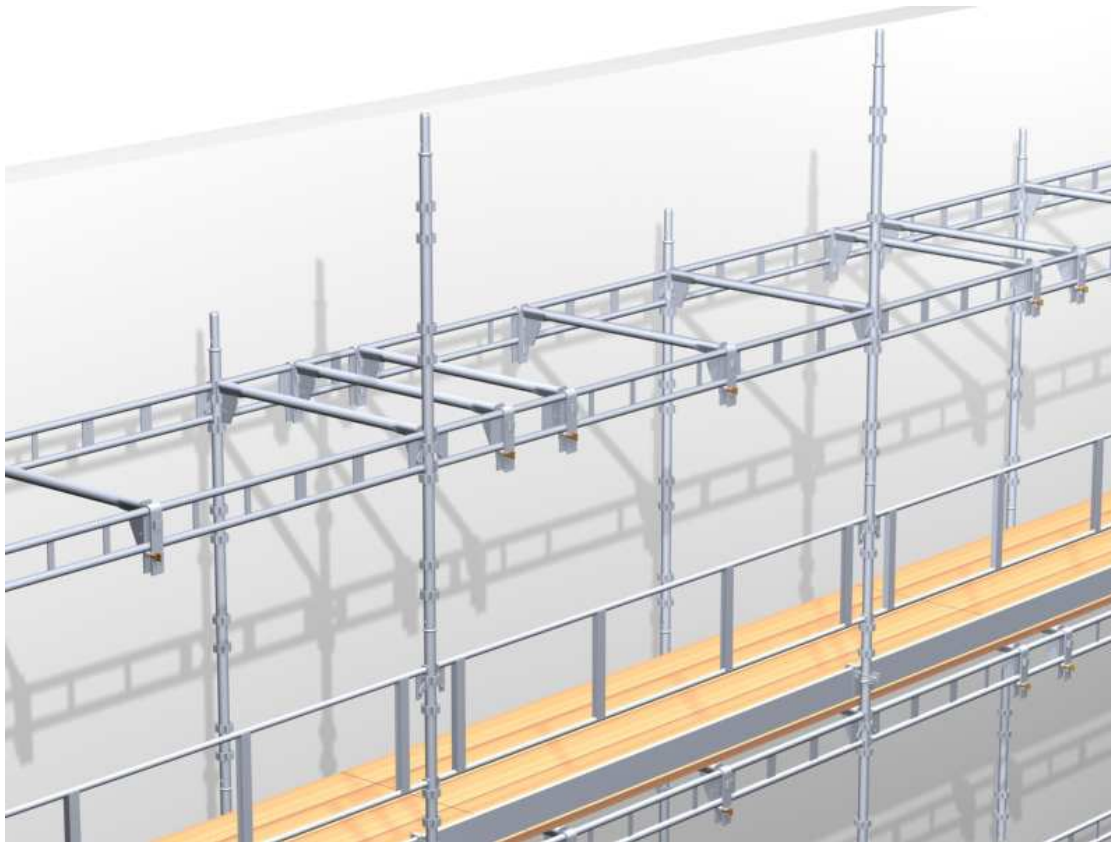
- Unique beam-rider solves tricky problems in **construction** and industrial applications
 - Maximum productivity
 - Fewer components
 - Maximum adaptability
- Other systems require standards at every load-bearing point in the structure
 - Spacing becomes critical
 - Bay size is restricted

Load Bearing Ledger Beam



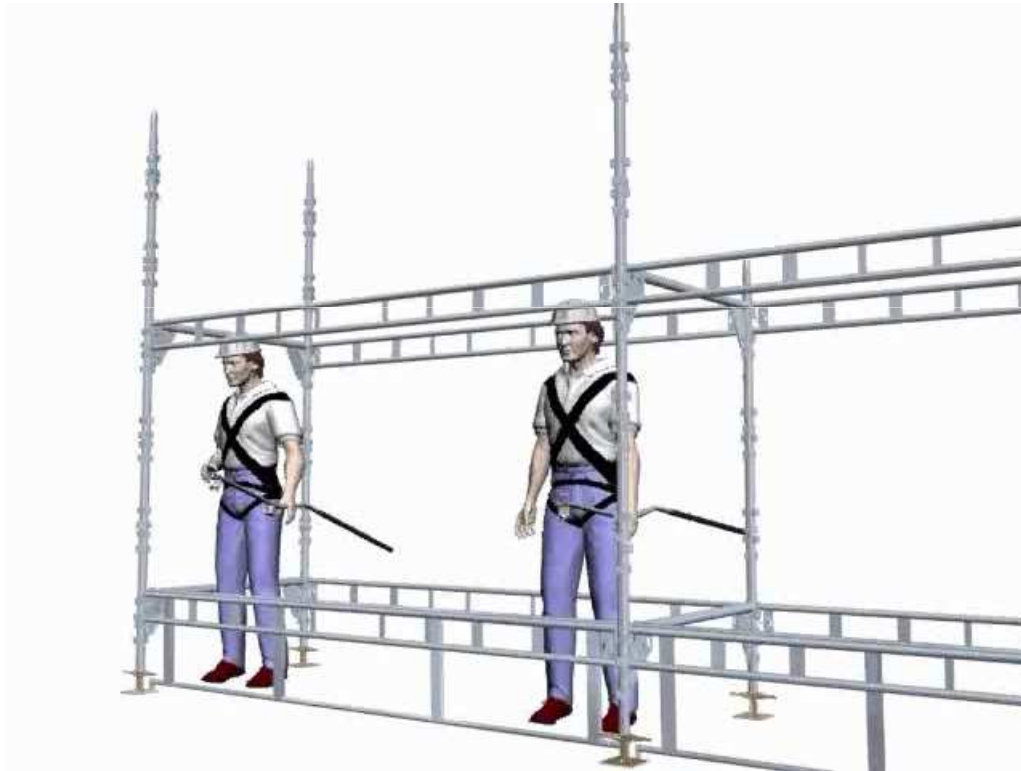
- Unique beam-rider solves tricky problems in construction and **industrial** applications
 - Maximum productivity
 - Fewer components
 - Maximum adaptability
- Other systems require standards at every load-bearing point in the structure
 - Spacing becomes critical
 - Bay size is restricted

Load Bearing Ledger Beam



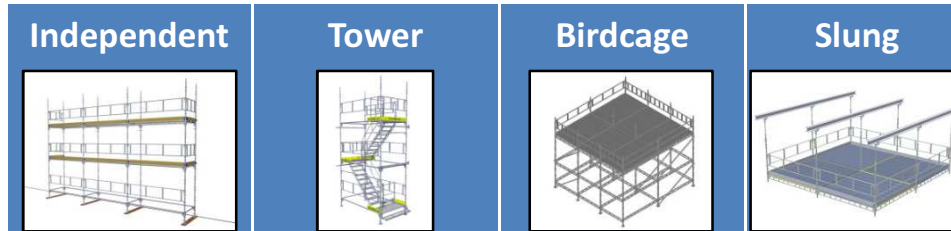
- Unique beam-rider allows additional transoms at any position, to support traditional scaffold boards where required
 - Maintains maximum bay size for maximum productivity
 - Maximum adaptability with standard components

Advanced Guard Rail



- The simple-to-use HAKI Advanced Guard Rail (AGR) tool allows Universal guard frames to be positioned from a safe location on the ground (as illustrated) or from a lower lift
- Maintains collective protection for scaffolders
 - No additional scaffolding material required
 - No temporary guard-rail to install and remove
 - No additional labour time

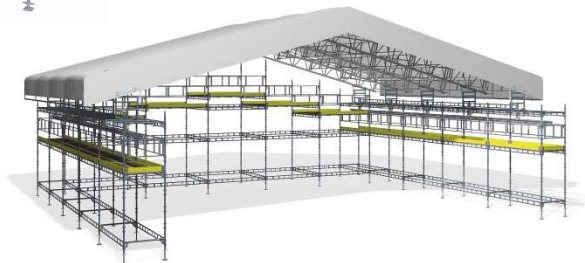
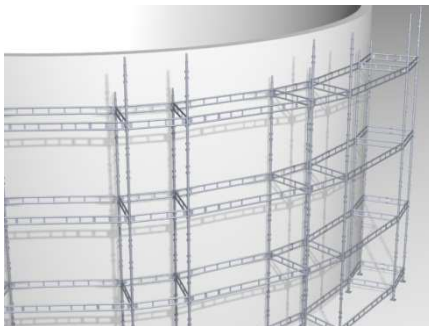
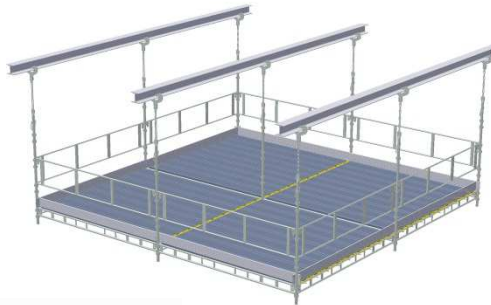
Multi-functional Components for Maximum Utilization



Comparison with ring-type system scaffold

	Independent	Tower	Birdcage	Slung	
Base Jack	✓	✓	✓		Single base jack with 550mm adjustment. Ring-type: 3 variants for different applications with additional starter collar.
Standard	✓	✓	✓	✓	Single standard for all applications. Ring-type: Different standard (with a spigot) for slung scaffolds, plus other components
Ledger Beam	✓	✓	✓	✓	Single load-bearing ledger for all applications. Ring-type: Different heavy-duty version required for towers, birdcages and some slung scaffolds.
Transom	✓	✓	✓	✓	Single transom for all decking options. Ring-type: Different transom for different decks, not compatible with usual scaffold board widths.
Guard-frame	✓	✓	✓	✓	Single guard frame, also utilized in roof & beam systems. Ring-type: 2 components required, plus temporary guard rail system for safety compliance.
Beam Rider	✓	✓	✓	✓	Unique HAKI component enables off-node connections. Ring-type: Standards required at all nodes, increasing component count and restricting bay sizes.
Steel Deck	✓	✓	✓	✓	Class 4 HD loading in 3m bays, standard board widths. Ring type: Non-standard widths, requires additional component to lock against lift off (LALO).

Multi-functional Components for Maximum Utilization



- HAKI Universal utilizes the same 7 to 10 basic components in a wide range of structures
 - Maximum utilization
 - Minimum investment
- Other systems require different standards, ledgers and frames for different applications

Build comparison: HAKI Universal vs. Ring-type

3m x 2.5m tower, 1 boarded lift, 2 men, collective fall prevention



HAKI: 34 pieces (inc AGR tools)
and 6 different items



Ring: 54 pieces (inc TGR) and 10
different items

Build comparison: HAKI Universal vs. Ring-type

TIME AND METHOD COMPARISON

HAKI Universal Tower
vs
Layher Allround® Tower

Erected by 2 men using Advanced
Guardrail Technique in compliance
with SG4:10.

3m x 2.5m tower

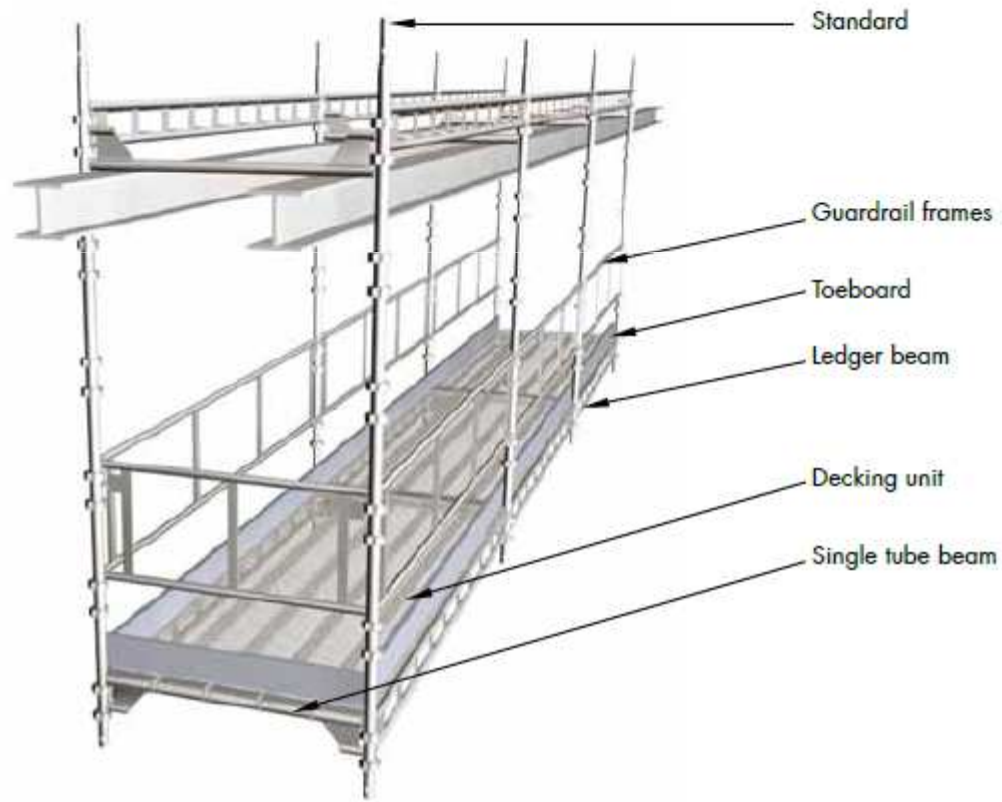
1 boarded lift

2 men

SG4:10 compliant



Suspended Scaffold “inverted-beam”



Suspended Scaffold “inverted-beam”



- Note use of ledger beam upside down as suspension device

Suspended Scaffold “inverted-beam”



- ❑ Attach guardrails

Suspended Scaffold “inverted-beam”



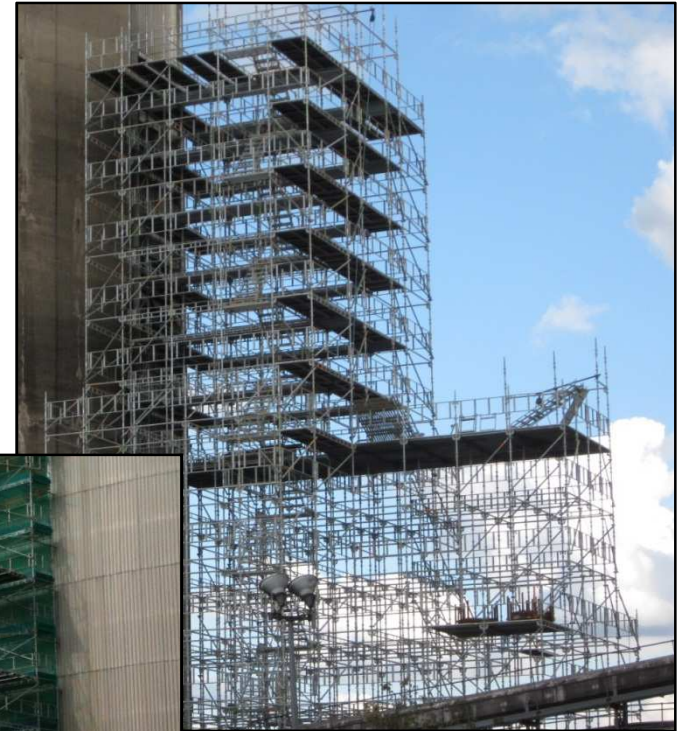
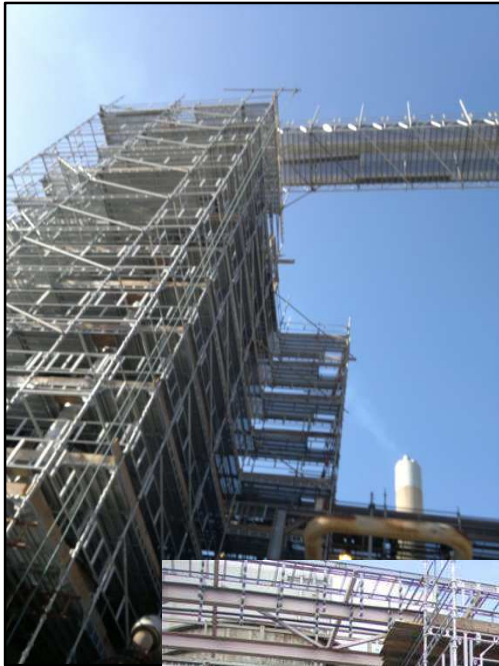
- ❑ Use of caddy for safe assembly of decking

Suspended Scaffold “inverted-beam”



- Complete assembly of bay

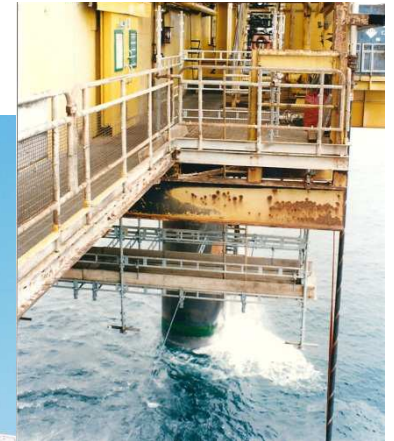
Use in Industry: Processing & Chemical



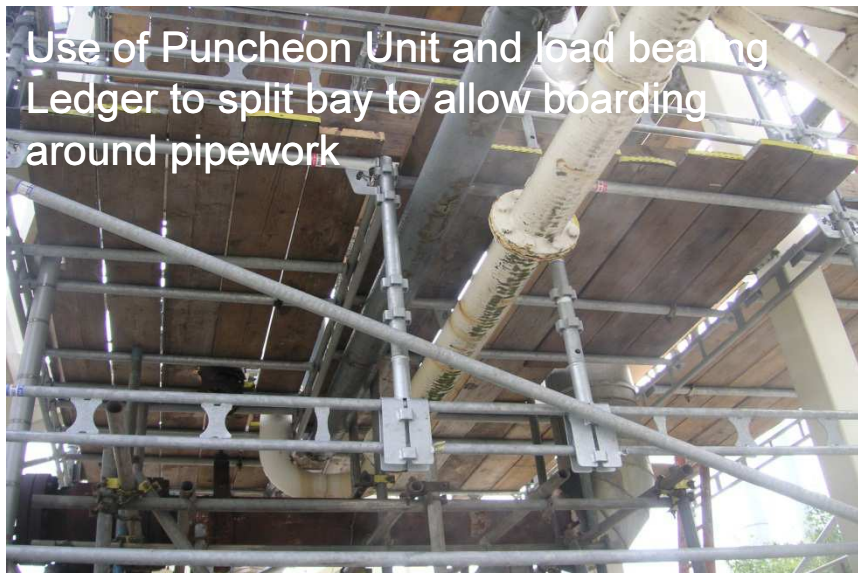
Use in Industry: Power Generation



Use in Industry: Marine / Offshore



Compatibility with conventional scaffolding



- Standard scaffold board widths
- Single transom type for all boarding options
- Utilizes existing walk-board and toe-board stocks
- Compatible with existing ladder access, gates etc.

Compatibility with conventional scaffolding / other systems

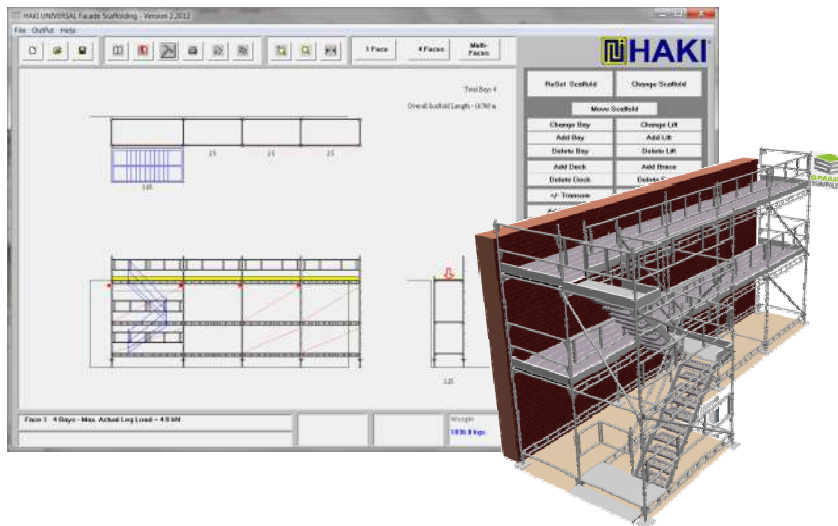
Intuitive in use, “think like t&f”



Splicing with standard couplers

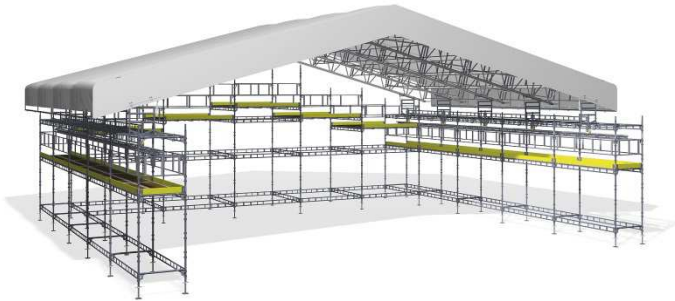


Technical Support

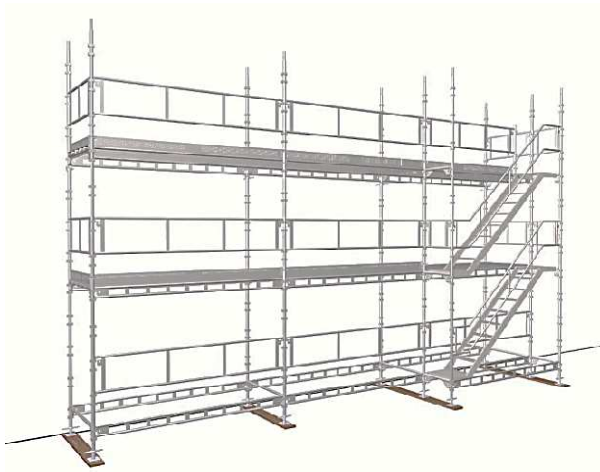


- Estimating software
- Design support
- Project back up
- User guides, including support in drafting customer procedures
- User videos
- Train-the-trainer instruction
- Yard Organisation
- Material handling
- Specialist solutions

HAKI features and benefits



HAKITEC® weather protection

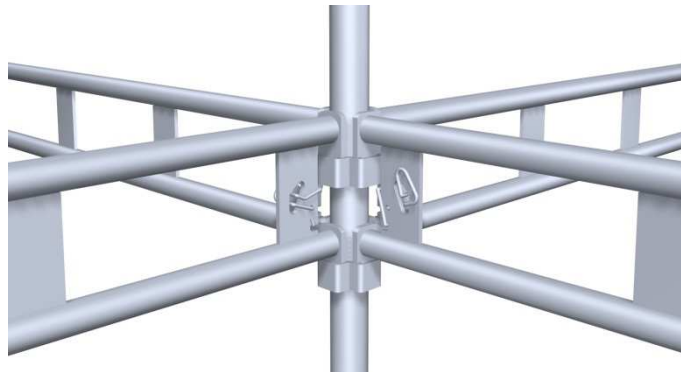


HAKI® Universal scaffolding

- **HAKI® Universal** scaffolding and **HAKITEC®** weather protection are the safest systems on the market
- **Adaptable** with maximum utilization of the same 7-10 basic components
- **Productive** with gains against other systems of at least 30%
- **Expert** with training, technical support and project engineered solutions

Decreased total project costs, fewer project delays, more satisfied clients, safer employees, increased financial returns





HAKI AB, Sibbhult, Sweden
www.haki.com

Reference customers



Norway



United Kingdom



United Kingdom



Norway



Norway



Sweden



Europe / Australasia



USA / Canada

