

100% digital electrohydraulics

Atos digital proportionals offer a powerful mix of innovative features

Complete range of valves and controls with rugged design and outstanding performance



atos® 
the Italian electrohydraulics

Digital range

The outstanding performances of Atos digital proportionals are the result of long lasting R&D activities

Basic B silver execution:

- digital performances at analog price
- analog commands signal
- rugged design - up to 50g
- temperature range $-40^{\circ}\text{C} \div +60^{\circ}\text{C}$
- water & dust proof - IP66/67
- 200 h in salt spray

Full S black execution:

- wide range of fieldbus interfaces
- P/Q control function
- TÜV certified safety functions

- 1 high performance proportional
- 2 direct & pilot operated servoproportionals
- 3 pilot operated servoproportional, size 35

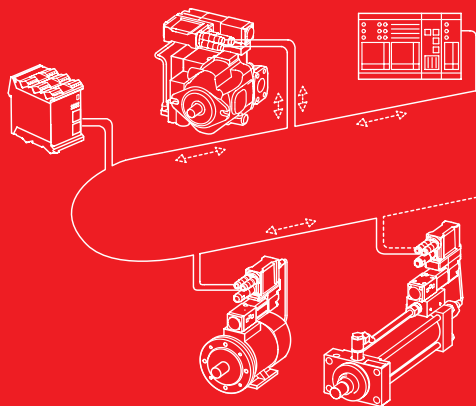


**LOOKS ANALOG
WORKS DIGITAL**



Fieldbus

- BC CANopen
- BP PROFIBUS DP
- EH EtherCAT
- EW POWERLINK
- EI EtherNet/IP
- EP PROFINET

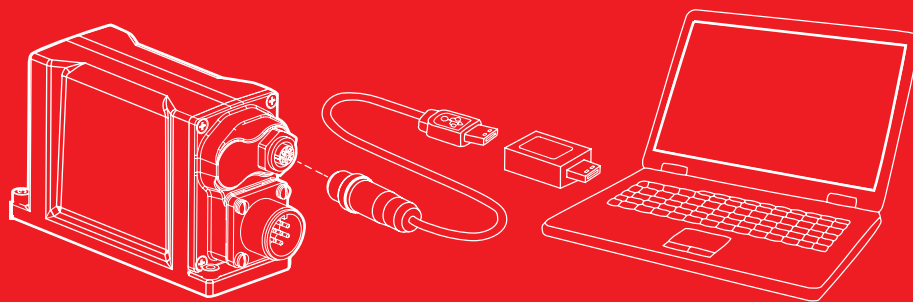


Real time access to valves' parameters and diagnostics

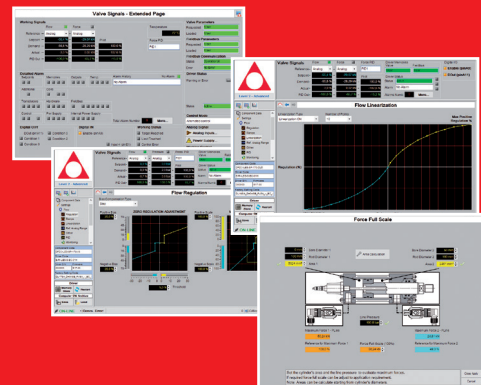
Software

E-SW programming software allows to set the electronic driver's functional parameters

Basic version is available by free web download



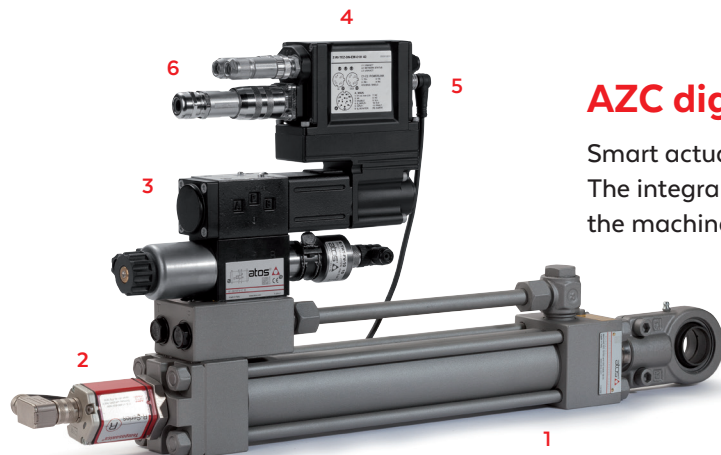
- graphics organized in pages and levels
- numerical optimization of factory preset parameters
- real time monitoring
- advanced diagnostics
- internal oscilloscope



TEZ servoproportionals with axis control

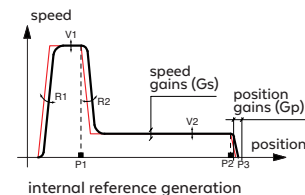
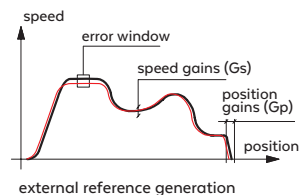
Servoproportional valves with LVDT transducer, on-board digital driver & axis card perform position, speed and force controls of any electrohydraulic axis

Axis cards are also available for cabinet installations in off-board execution, with or without driver function

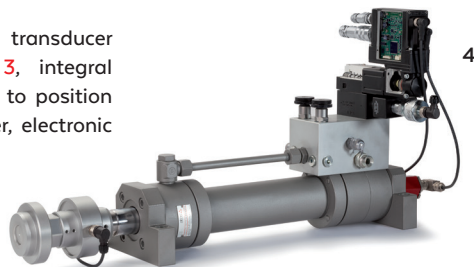


AZC digital servoactuators

Smart actuators performing the complete axis motion cycle
The integral construction improves the performance and simplifies the machine's wiring



servocylinder 1 with position transducer 2, servoproportional valve 3, integral TEZ controller 4, connections to position transducer 5, to electric power, electronic signals and fieldbus 6



- 4 AZC servoactuator with flow/force control by load cell
- 5 Z-BM-TEZ off-board digital axis card with driver function

TEB & TES proportionals with LVDT transducer

Directional and flow control valves with on-board digital driver

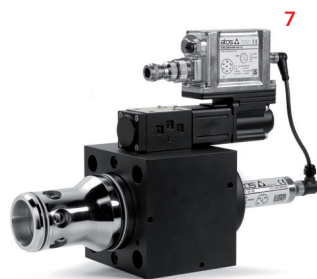
Off-board digital drivers are available for cabinet installation



6

High Performance proportionals

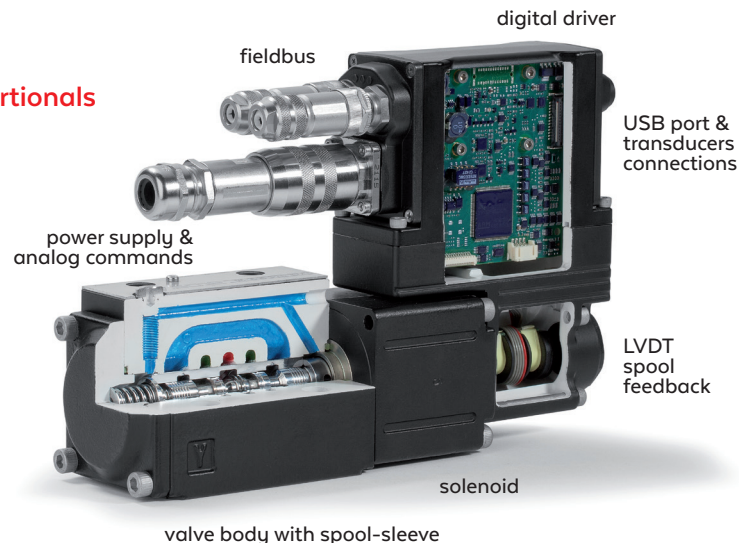
With positive overlap spool and central rest position



7

Servoproportionals

Sleeve execution with zero overlap spool for accurate closed loop position controls & fail safe function
Pilot operated directional control valves 6 & high dynamic servocartridges 7 are equipped with 2 position transducers

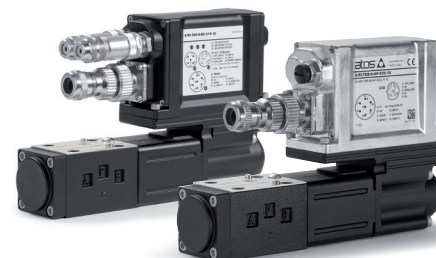


8



8 E-BM-TES off-board digital driver, DIN rail mounting

9 TEB & TES servoproportionals



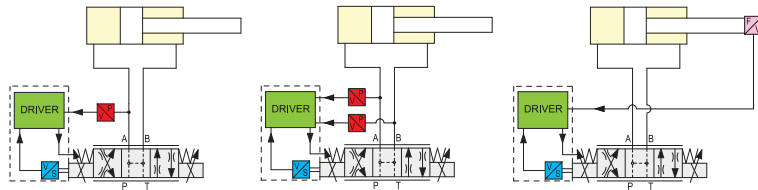
9

P/Q options for TES & TEZ proportionals

SP, SF, SL options add pressure (force) closed loop control combined to the flow (speed) regulation of proportional directional control valves

Functional schemes

SP - 1 pressure transducer **SF** - 2 pressure transducers **SL** - load cell



■ electronic driver

■ valve position transducer

■ pressure transducer

■ load cell



10



11



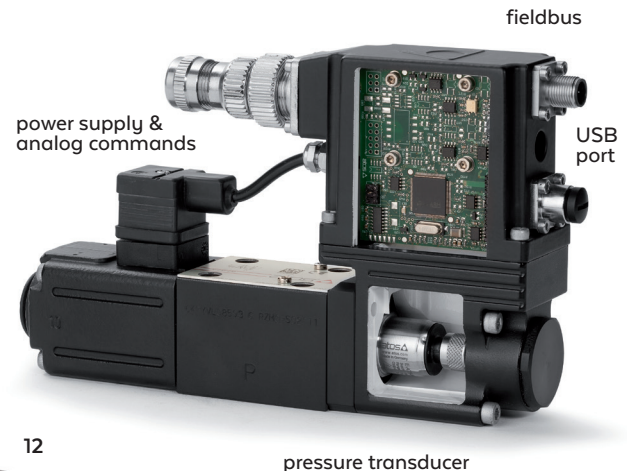
12

REB & RES pressure controls

Relief or reducing proportionals with pressure closed loop to ensure best accuracy and repeatability

These on board digital drivers offer four preset dynamic configurations:

1 fast - 2 standard - 3 smooth - 4 open loop



10 PES axial piston pump with P/Q control

11 TES servoproportional with SF option

12 E-BM-RES digital driver, DIN rail mounting

AEB & AES proportionals without LVDT transducer

Directional, flow and pressure control valves with on-board digital drivers

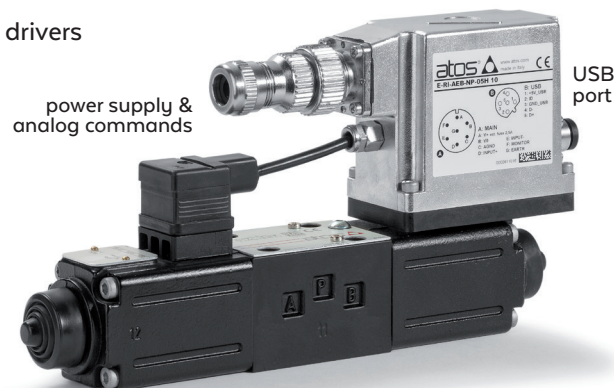


13 AEB directional proportional

14 AES pilot operated pressure control

18 DHZO-A directional proportional

19 AGMZE-A pilot operated pressure control



Digital off-board drivers

DIN rail mounting for cabinet installation

E-BM-AS cost-effective solution 15

E-BM-AES high performance with fieldbus 16

W option adds max power limitation PxQ

ZO-A & ZE-A proportionals

Directional, flow and pressure control valves without LVDT transducer & electronic driver:

ZO-A high performance

ZE-A cost-effective solution

E-MI-AS digital driver, coil mounting 17





Atos regularly hold technical training courses on digital electrohydraulics
Our specialists are available for on-site technical support at customer locations



Atos spa

Italy - 21018 Sesto Calende

phone +39 0331 918370

info@atos.com

www.atos.com