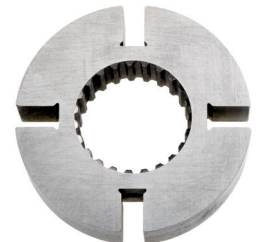
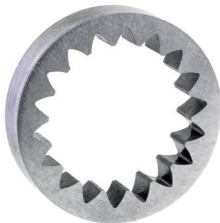
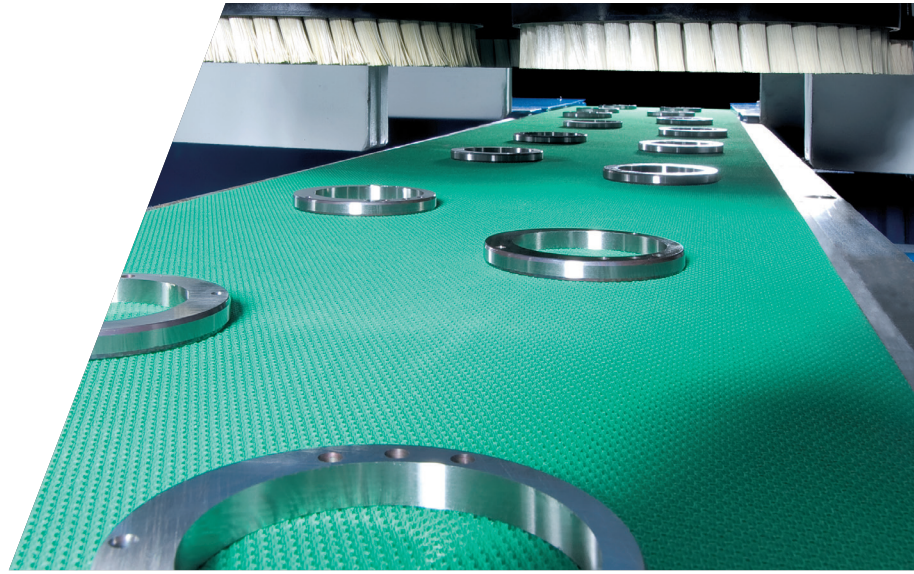


BD 300-L

HIGH-PRECISION ECONOMICAL DEBURRING OF FLAT WORK PIECES



WORK PIECES UP TO
270 MM DIAMETER
50 MM THICKNESS



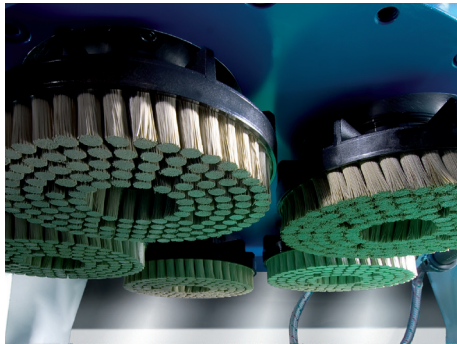
PRODUCTIVITY REDEFINED

- ✓ 1-4 Burr-Ex[®] deburring units
- ✓ Wide range of solutions in the area of deburring technology and defined edge rounding
- ✓ Removal of primary and secondary burrs
- ✓ Surface improvement
- ✓ Easy integration into existing and new production lines

HIGH-SPEED DEBURRING FOR MAXIMUM PRODUCTIVITY

HIGHLIGHTS BD 300-L

- ✔ Good accessibility, easy to service and maintain, safe and simple operation
- ✔ Integrated demagnetizing unit
- ✔ Simple and very fast tool change with magnets as tool holder
- ✔ Automatic tool length measurement
- ✔ Flip-over concepts for double-side machining available
- ✔ Stable welded steel frame ensures high process precision
- ✔ Good accessibility and maintenance friendly
- ✔ Individual process development ensures highest productivity
- ✔ High process stability
- ✔ Automatic tool wear compensation for maximum accuracy
- ✔ Quick and easy adjustment for different work pieces
- ✔ Siemens PLC Control and Siemens 12" Touch Panel
- ✔ Remote maintenance solution RangeCare® via mobile communications or VPN



Burr-Ex® deburring unit



BD 300-L long basic machine with up to four deburring units



BD 300-L with flip-over device for double-side machining for magnetic work pieces

TECHNICAL DATA	BD 300-L
Max. work piece width (mm)	270
– with flip-over device	125
Max. work piece height (mm)	50
Burr-Ex® deburring units	
– short basic machine version	1 – 2 deburring units
– long basic machine version	3 – 4 deburring units
Tool drive power (kW)	5.5
Tool rotation speed (rpm)	300 – 3000
Head drive power (kW)	1.5
Head rotation speed (rpm)	30 – 300
Deburring tools per station (qty)	5
Deburring tool Ø (mm)	150
Transport belt speed (m / min)	0.5 – 10 / 12
Transport belt width (mm)	300
Dimensions (H × W × D) (mm)	
– short basic machine version	2540 × 3070 × 1700
– long basic machine version	2540 × 4390 × 1700



A small selection of brush tools used

GET IN TOUCH WITH US TODAY
TOGETHER WE WILL FIND A SOLUTION
FOR YOUR REQUIREMENTS

LAPMASTER WOLTERS GMBH

Phone: +49 4331 458 0
 deburring@lapmaster-wolters.de
 www.lapmaster-wolters.de